

Suggested Routing:

Service Sales Parts

Date: March 14, 2014

No. 2014-01(P)
Replaces Bulletin 2011-05(P)

MODELS: 15 – 130 HP Trim & Tilt Piston Seal Kits

SUBJECT: Installation Instructions

Evinrude® Dealers:

This bulletin replaces any version of bulletin 2011-05(P).

Mark any electronic or printed version of bulletin 2011-05(P) obsolete and replace with this version.

This information includes the installation instructions for installing Trim & Tilt Piston Seal Kits purchased under the following part numbers:

5008985	5008984	5008773 (did not include end cap) (supersedes to 5008985)	5008772 (did not include end cap) (supersedes to 5008984)
---------	---------	-----------------------------------------------------------------	-----------------------------------------------------------------

If you have 5008773 or 5008772 in stock, print this bulletin and insert it into the kit(s).

TRIM & TILT PISTON SEAL KITS
P/N's 5008984 & 5008985



009986

IMPORTANT: Use of Trim & Tilt Piston Seal Tool Kit 5008918 and Spanner Tool 352932 are required to install the components of these kits.

APPLICATIONS

Models	Hydraulic Assembly P/N	Seal Kit
15 H.O. E-TEC	5008228	5008984
25 – 30 E-TEC	5007774 <small>(supersedes to 5009035)</small>	
40 – 60 E-TEC	5005441	
	5007774 <small>(supersedes to 5009035)</small>	
40/50 Carbureted	5007775	5008985
75 – 90 HP (1.3L) Inline	5005756	
	5007776	
115 – 130 HP 60° V4 (1.7L)	5008949	

NOTICE

Do NOT use the end cap included in kit 5008985 on Hydraulic Assembly 5005756.

HYDRAULIC ASSEMBLY IDENTIFICATION

Part numbers are stamped on the bottom of the housing of the hydraulic assembly.



END CAP RESEAL PROCEDURE FOR HYDRAULIC ASSEMBLY, P/N 5005756

Remove the o-ring.



HYDRAULIC ASSEMBLY 5005756 ONLY

NOTICE

The end cap from hydraulic assembly 5005756 contains a machined groove on its underside, it **MUST** be resealed and reused.

The new end cap included in seal kit 5008985 does not contain the machined groove. Do **NOT** use this new end cap on hydraulic assembly 5005756. Incorrect operation and permanent damage of the trim and tilt unit may occur.

All other components of kit 5008985 may be used as required.

Remove the wiper seal.



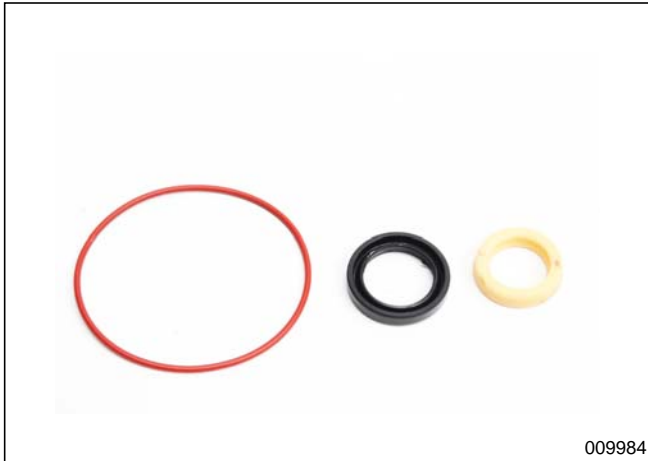
END CAP IDENTIFICATION



Remove the u-cup.



IMPORTANT: Discard the o-ring, wiper seal, and u-cup. Do NOT reuse them.



Clean the end cap thoroughly.

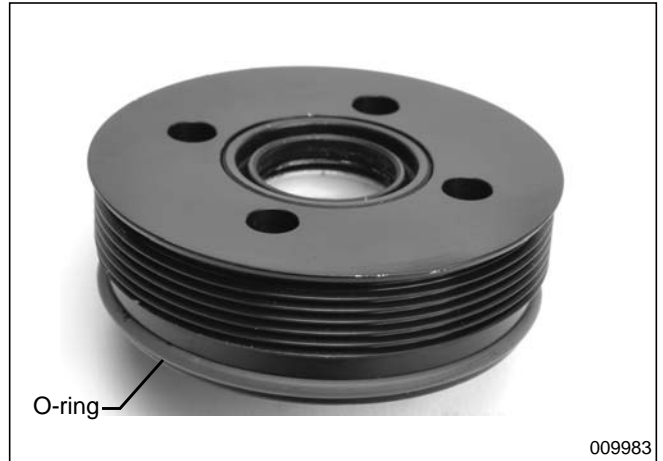
Lubricate and install the new u-cup with the lip side facing the bottom of the end cap.



Lubricate and install the new wiper seal with the lip side facing the top of the end cap.



IMPORTANT: Lubricate and install the new o-ring.



Lubricate the threads of the end cap prior to assembly.