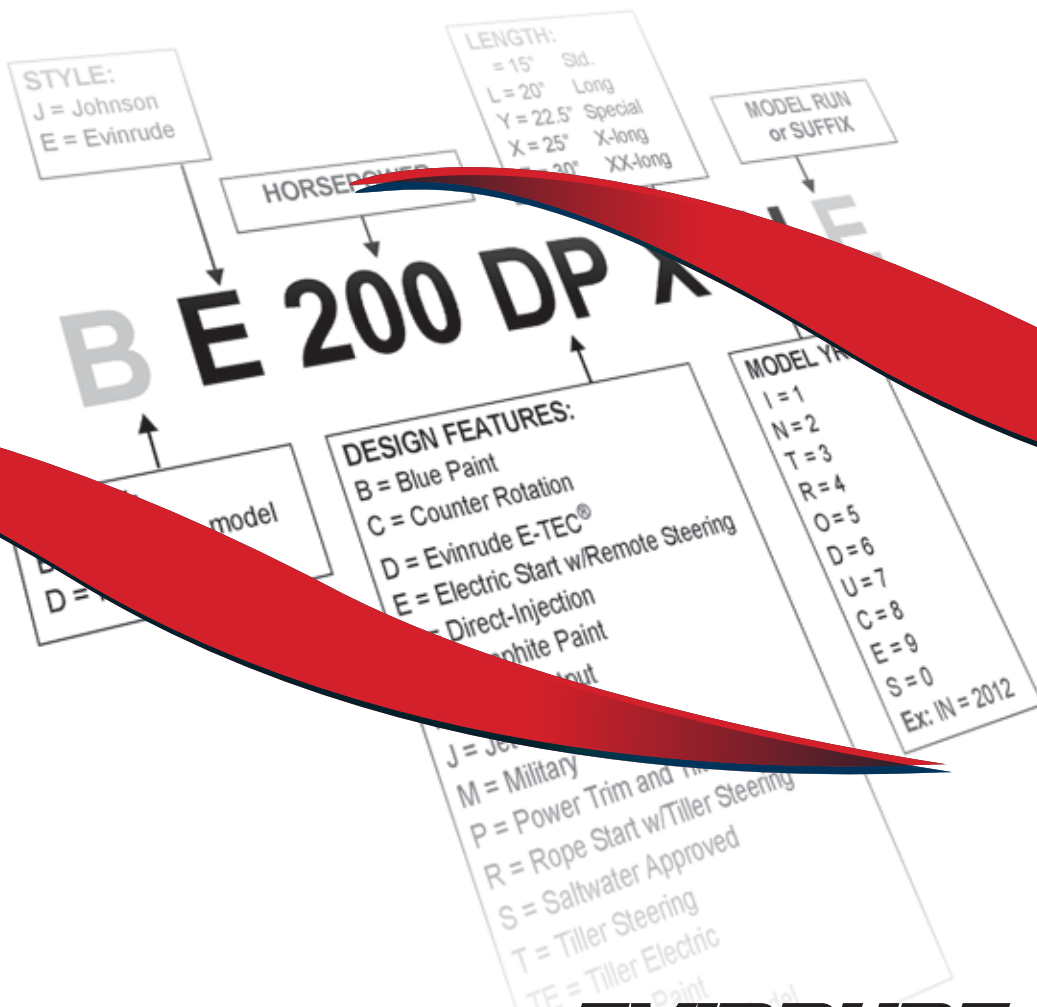




## MODEL NUMBER REFERENCE

### 2005 TO PRESENT

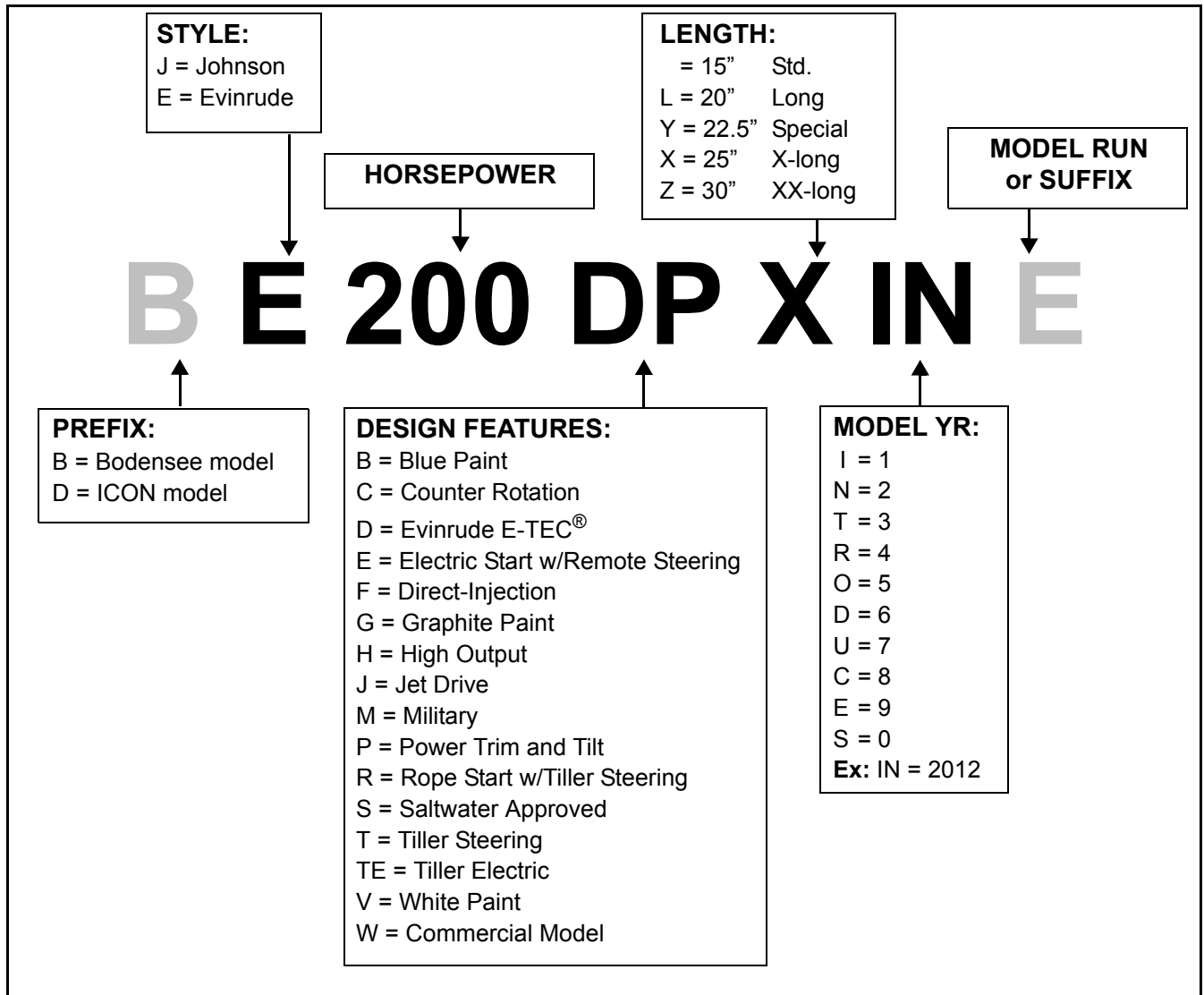


**EVINRUDE®**  
**Johnson®**

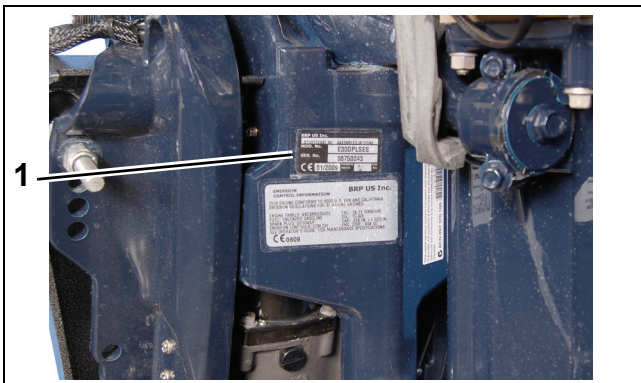




# MODEL DESIGNATION

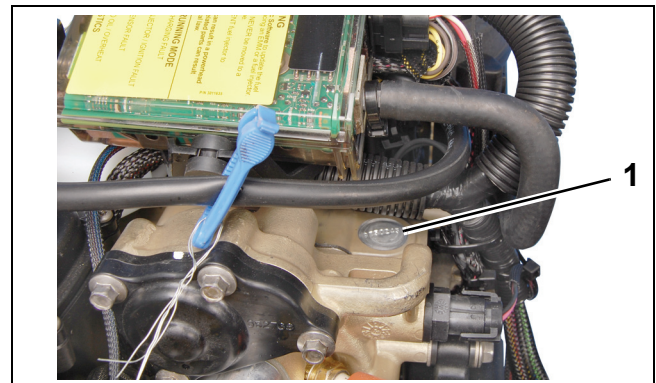


Model and serial numbers are located on the swivel bracket and on the powerhead.



1. Model and serial number

007445



1. Serial number

007446

---

MODEL DESIGNATION

---

## Evinrude and Johnson Outboards 2005 - 2012

Horsepower	Model Number	Model Year	Engine	Shaft Length	Color	Steering	Starting	Midsection
2.5	J2R4SUC	2007	1 Cyl. / 4.15 cu in	15"	White	Tiller	Rope	Manual Tilt
2.5	J2R4SDS	2006	1 Cyl. / 4.15 cu in	15"	White	Tiller	Rope	Manual Tilt
3.5	J3RSDE	2006	1 Cyl. / 4.8 cu in	15"	White	Tiller	Rope	Manual Tilt
3.5	J3RSOD	2005	1 Cyl. / 4.8 cu in	15"	White	Tiller	Rope	Manual Tilt
4	J4R4SUM	2007	1 Cyl. / 8.4 cu in	15"	White	Tiller	Rope	Manual Tilt
4	J4RL4SUM	2007	1 Cyl. / 8.4 cu in	20"	White	Tiller	Rope	Manual Tilt
4	J4R4SDA	2006	1 Cyl. / 8.4 cu in	15"	White	Tiller	Rope	Manual Tilt
4	J4RL4SDA	2006	1 Cyl. / 8.4 cu in	20"	White	Tiller	Rope	Manual Tilt
4	J4R4SOR	2005	1 Cyl. / 8.4 cu in	15"	White	Tiller	Rope	Manual Tilt
4	J4RL4SOR	2005	1 Cyl. / 8.4 cu in	20"	White	Tiller	Rope	Manual Tilt
5	J5R4SUM	2007	1 Cyl. / 8.4 cu in	15"	White	Tiller	Rope	Manual Tilt
5	J5RL4SUM	2007	1 Cyl. / 8.4 cu in	20"	White	Tiller	Rope	Manual Tilt
5	J5R4SDA	2006	1 Cyl. / 8.4 cu in	15"	White	Tiller	Rope	Manual Tilt
5	J5RL4SDA	2006	1 Cyl. / 8.4 cu in	20"	White	Tiller	Rope	Manual Tilt
5	J5R4SOR	2005	1 Cyl. / 8.4 cu in	15"	White	Tiller	Rope	Manual Tilt
5	J5RL4SOR	2005	1 Cyl. / 8.4 cu in	20"	White	Tiller	Rope	Manual Tilt
6	J6R4SUR	2007	1 Cyl. / 8.4 cu in	15"	White	Tiller	Rope	Manual Tilt
6	J6RL4SUR	2007	1 Cyl. / 8.4 cu in	20"	White	Tiller	Rope	Manual Tilt
6	J6R4SDC	2006	1 Cyl. / 8.4 cu in	15"	White	Tiller	Rope	Manual Tilt
6	J6RL4SDC	2006	1 Cyl. / 8.4 cu in	20"	White	Tiller	Rope	Manual Tilt
6	J6R4SOS	2005	1 Cyl. / 8.4 cu in	15"	White	Tiller	Rope	Manual Tilt
6	J6RL4SOS	2005	1 Cyl. / 8.4 cu in	20"	White	Tiller	Rope	Manual Tilt
6	J6R4SOXR	2005	1 Cyl. / 8.4 cu in	15"	White	Tiller	Rope	Manual Tilt
6	J6RL4SOXR	2005	1 Cyl. / 8.4 cu in	20"	White	Tiller	Rope	Manual Tilt
6	J6RSOC	2005	2 Cyl. / 10.0 cu in	15"	White	Tiller	Rope	Manual Tilt
6	J6RLSOC	2005	2 Cyl. / 10.0 cu in	20"	White	Tiller	Rope	Manual Tilt
8	J8RSOR	2005	2 Cyl. / 10.0 cu in	15"	White	Tiller	Rope	Manual Tilt
8	J8RLSOR	2005	2 Cyl. / 10.0 cu in	20"	White	Tiller	Rope	Manual Tilt
8	J8R4SOR	2005	2 Cyl. / 12.8 cu in	15"	White	Tiller	Rope	Manual Tilt
8	J8RL4SOR	2005	2 Cyl. / 12.8 cu in	20"	White	Tiller	Rope	Manual Tilt
9.9	J10RSUR	2007	2 Cyl. / 15.6 cu in	15"	White	Tiller	Rope	Manual Tilt
9.9	J10RLSUR	2007	2 Cyl. / 15.6 cu in	20"	White	Tiller	Rope	Manual Tilt
9.9	J10R4SUB	2007	2 Cyl. / 18.4 cu in	15"	White	Tiller	Rope	Manual Tilt
9.9	J10RL4SUB	2007	2 Cyl. / 18.4 cu in	20"	White	Tiller	Rope	Manual Tilt
9.9	J10TE4SUB	2007	2 Cyl. / 18.4 cu in	15"	White	Tiller	Electric	Manual Tilt
9.9	J10TEL4SUB	2007	2 Cyl. / 18.4 cu in	20"	White	Tiller	Electric	Manual Tilt
9.9	J10TBL4SUD	2007	2 Cyl. / 18.4 cu in	20"	Blue	Tiller	Electric	Manual Tilt
9.9	J10EL4SUM	2007	2 Cyl. / 18.4 cu in	20"	White	Remote	Electric	Manual Tilt
9.9	J10BL4SUM	2007	2 Cyl. / 18.4 cu in	20"	Blue	Remote	Electric	Manual Tilt
9.9	J10R4SUB	2007	2 Cyl. / 18.4 cu in	15"	White	Tiller	Rope	Manual Tilt
9.9	J10RL4SUB	2007	2 Cyl. / 18.4 cu in	20"	White	Tiller	Rope	Manual Tilt
9.9	J10TE4SUB	2007	2 Cyl. / 18.4 cu in	15"	White	Tiller	Electric	Manual Tilt
9.9	J10TEL4SUB	2007	2 Cyl. / 18.4 cu in	20"	White	Tiller	Electric	Manual Tilt
9.9	J10TBL4SUD	2007	2 Cyl. / 18.4 cu in	20"	Blue	Tiller	Electric	Manual Tilt
9.9	J10EL4SUM	2007	2 Cyl. / 18.4 cu in	20"	White	Remote	Electric	Manual Tilt
9.9	J10BL4SUM	2007	2 Cyl. / 18.4 cu in	20"	Blue	Remote	Electric	Manual Tilt
9.9	J10RSDC	2006	2 Cyl. / 15.6 cu in	15"	White	Tiller	Rope	Manual Tilt
9.9	J10RLSDC	2006	2 Cyl. / 15.6 cu in	20"	White	Tiller	Rope	Manual Tilt
9.9	BJ10RHSDA	2006	2 Cyl. / 15.6 cu in	15"	White	Tiller	Rope	Manual Tilt
9.9	BJ10RHLSDA	2006	2 Cyl. / 15.6 cu in	20"	White	Tiller	Rope	Manual Tilt
9.9	J10R4SDM	2006	2 Cyl. / 18.4 cu in	15"	White	Tiller	Rope	Manual Tilt
9.9	J10RL4SDM	2006	2 Cyl. / 18.4 cu in	20"	White	Tiller	Rope	Manual Tilt
9.9	J10TE4SDM	2006	2 Cyl. / 18.4 cu in	15"	White	Tiller	Electric	Manual Tilt
9.9	J10TEL4SDM	2006	2 Cyl. / 18.4 cu in	20"	White	Tiller	Electric	Manual Tilt
9.9	J10TBL4SDE	2006	2 Cyl. / 18.4 cu in	20"	Blue	Tiller	Electric	Manual Tilt
9.9	J10EL4SDA	2006	2 Cyl. / 18.4 cu in	20"	White	Remote	Electric	Manual Tilt
9.9	J10RSOS	2005	2 Cyl. / 15.6 cu in	15"	White	Tiller	Rope	Manual Tilt
9.9	J10RLSOS	2005	2 Cyl. / 15.6 cu in	20"	White	Tiller	Rope	Manual Tilt
9.9	BJ10RHLSOR	2005	2 Cyl. / 15.6 cu in	15"	White	Tiller	Rope	Manual Tilt
9.9	BJ10RHLSOR	2005	2 Cyl. / 15.6 cu in	20"	White	Tiller	Rope	Manual Tilt
9.9	J10R4SOA	2005	2 Cyl. / 18.4 cu in	15"	White	Tiller	Rope	Manual Tilt
9.9	J10RL4SOA	2005	2 Cyl. / 18.4 cu in	20"	White	Tiller	Rope	Manual Tilt
9.9	J10TE4SOA	2005	2 Cyl. / 18.4 cu in	15"	White	Tiller	Electric	Manual Tilt
9.9	J10TEL4SOA	2005	2 Cyl. / 18.4 cu in	20"	White	Tiller	Electric	Manual Tilt
9.9	J10TBL4SOB	2005	2 Cyl. / 18.4 cu in	20"	Blue	Tiller	Electric	Manual Tilt
9.9	J10EL4SOR	2005	2 Cyl. / 18.4 cu in	20"	White	Remote	Electric	Manual Tilt
15	E15DHTLINR	2012	2 Cyl. / 35.2 cu in	20"	Blue	Tiller	Rope/Electric	Power Tilt
15	E15DHPLINR	2012	2 Cyl. / 35.2 cu in	20"	Blue	Remote	Rope/Electric	Power Tilt
15	E15HTSLINC	2012	2 Cyl. / 35.2 cu in	20"	White	Tiller	Rope/Electric	Power Tilt
15	E15HTSXINC	2012	2 Cyl. / 35.2 cu in	25"	White	Tiller	Rope/Electric	Power Tilt

## Evinrude and Johnson Outboards 2005 - 2012

Horsepower	Model Number	Model Year	Engine	Shaft Length	Color	Steering	Starting	Midsection
15	E15HPSLINC	2012	2 Cyl. / 35.2 cu in	20"	White	Remote	Rope/Electric	Power Tilt
15	E15HPSXINC	2012	2 Cyl. / 35.2 cu in	25"	White	Remote	Rope/Electric	Power Tilt
15	E15DHTLIIC	2011	2 Cyl. / 35.2 cu in	20"	Blue	Tiller	Rope/Electric	Power Tilt
15	E15DHPLIIC	2011	2 Cyl. / 35.2 cu in	20"	Blue	Remote	Rope/Electric	Power Tilt
15	E15HTSLIIS	2011	2 Cyl. / 35.2 cu in	20"	White	Tiller	Rope/Electric	Power Tilt
15	E15HTSXIIIS	2011	2 Cyl. / 35.2 cu in	25"	White	Tiller	Rope/Electric	Power Tilt
15	E15HPSLIIS	2011	2 Cyl. / 35.2 cu in	20"	White	Remote	Rope/Electric	Power Tilt
15	E15HPSXIIIS	2011	2 Cyl. / 35.2 cu in	25"	White	Remote	Rope/Electric	Power Tilt
15	E15DHTLISS	2010	2 Cyl. / 35.2 cu in	20"	Blue	Tiller	Rope/Electric	Power Tilt
15	E15DHPLISS	2010	2 Cyl. / 35.2 cu in	20"	Blue	Remote	Rope/Electric	Power Tilt
15	J15R4SUB	2007	2 Cyl. / 18.4 cu in	15"	White	Tiller	Rope	Manual Tilt
15	J15RL4SUB	2007	2 Cyl. / 18.4 cu in	20"	White	Tiller	Rope	Manual Tilt
15	J15TE4SUB	2007	2 Cyl. / 18.4 cu in	15"	White	Tiller	Electric	Manual Tilt
15	J15TEL4SUB	2007	2 Cyl. / 18.4 cu in	20"	White	Tiller	Electric	Manual Tilt
15	J15EL4SUR	2007	2 Cyl. / 18.4 cu in	20"	White	Remote	Electric	Manual Tilt
15	J15RSUA	2007	2 Cyl. / 15.6 cu in	15"	White	Tiller	Rope	Manual Tilt
15	J15RLSUA	2007	2 Cyl. / 15.6 cu in	20"	White	Tiller	Rope	Manual Tilt
15	J15RTSUR	2007	2 Cyl. / 15.6 cu in	15"	White	Tiller	Rope	Manual Tilt
15	J15RSDR	2006	2 Cyl. / 15.6 cu in	15"	White	Tiller	Rope	Manual Tilt
15	J15RLSDR	2006	2 Cyl. / 15.6 cu in	20"	White	Tiller	Rope	Manual Tilt
15	J15RTSDC	2006	2 Cyl. / 15.6 cu in	15"	White	Tiller	Rope	Manual Tilt
15	J15R4SDM	2006	2 Cyl. / 18.4 cu in	15"	White	Tiller	Rope	Manual Tilt
15	J15RL4SDM	2006	2 Cyl. / 18.4 cu in	20"	White	Tiller	Rope	Manual Tilt
15	J15TE4SDM	2006	2 Cyl. / 18.4 cu in	15"	White	Tiller	Electric	Manual Tilt
15	J15TEL4SDM	2006	2 Cyl. / 18.4 cu in	20"	White	Tiller	Electric	Manual Tilt
15	J15EL4SDC	2006	2 Cyl. / 18.4 cu in	20"	White	Remote	Electric	Manual Tilt
15	J15RSOC	2005	2 Cyl. / 15.6 cu in	15"	White	Tiller	Rope	Manual Tilt
15	J15RLSOC	2005	2 Cyl. / 15.6 cu in	20"	White	Tiller	Rope	Manual Tilt
15	J15WRSOB	2005	2 Cyl. / 15.6 cu in	15"	Smoke	Tiller	Rope	Manual Tilt
15	J15WRLSOB	2005	2 Cyl. / 15.6 cu in	20"	Smoke	Tiller	Rope	Manual Tilt
15	J15RTSOS	2005	2 Cyl. / 15.6 cu in	15"	White	Tiller	Rope	Manual Tilt
15	J15R4SOA	2005	2 Cyl. / 18.4 cu in	15"	White	Tiller	Rope	Manual Tilt
15	J15RL4SOA	2005	2 Cyl. / 18.4 cu in	20"	White	Tiller	Rope	Manual Tilt
15	J15TE4SOA	2005	2 Cyl. / 18.4 cu in	15"	White	Tiller	Electric	Manual Tilt
15	J15TEL4SOA	2005	2 Cyl. / 18.4 cu in	20"	White	Tiller	Electric	Manual Tilt
15	J15EL4SOS	2005	2 Cyl. / 18.4 cu in	20"	White	Remote	Electric	Manual Tilt
25	E25DRINA	2012	2 Cyl. / 35.2 cu in	15"	Blue	Tiller	Rope	Manual Tilt
25	E25DRSINC	2012	2 Cyl. / 35.2 cu in	15"	White	Tiller	Rope	Manual Tilt
25	E25DRLINA	2012	2 Cyl. / 35.2 cu in	20"	Blue	Tiller	Rope	Manual Tilt
25	E25DRSLINC	2012	2 Cyl. / 35.2 cu in	20"	White	Tiller	Rope	Manual Tilt
25	E25DTEINA	2012	2 Cyl. / 35.2 cu in	15"	Blue	Tiller	Rope/Electric	Manual Tilt
25	E25DTELINA	2012	2 Cyl. / 35.2 cu in	20"	Blue	Tiller	Rope/Electric	Manual Tilt
25	E25TESLINC	2012	2 Cyl. / 35.2 cu in	20"	White	Tiller	Rope/Electric	Manual Tilt
25	E25DELINA	2012	2 Cyl. / 35.2 cu in	20"	Blue	Remote	Rope/Electric	Manual Tilt
25	E25DPLINA	2012	2 Cyl. / 35.2 cu in	20"	Blue	Remote	Rope/Electric	Power Tilt
25	E25DPSLINC	2012	2 Cyl. / 35.2 cu in	20"	White	Remote	Rope/Electric	Power Tilt
25	E25DTLINA	2012	2 Cyl. / 35.2 cu in	20"	Blue	Tiller	Rope/Electric	Power Tilt
25	E25DTSLINC	2012	2 Cyl. / 35.2 cu in	20"	White	Tiller	Rope/Electric	Power Tilt
25	E25DRIIR	2011	2 Cyl. / 35.2 cu in	15"	Blue	Tiller	Rope	Manual Tilt
25	E25DRIIH	2011	2 Cyl. / 35.2 cu in	15"	Blue	Tiller	Rope	Manual Tilt
25	E25DRSIIS	2011	2 Cyl. / 35.2 cu in	15"	White	Tiller	Rope	Manual Tilt
25	E25DRSIIH	2011	2 Cyl. / 35.2 cu in	15"	White	Tiller	Rope	Manual Tilt
25	E25DRLIIR	2011	2 Cyl. / 35.2 cu in	20"	Blue	Tiller	Rope	Manual Tilt
25	E25DRLIIH	2011	2 Cyl. / 35.2 cu in	20"	Blue	Tiller	Rope	Manual Tilt
25	E25DRSLIIS	2011	2 Cyl. / 35.2 cu in	20"	White	Tiller	Rope	Manual Tilt
25	E25DRSLIIH	2011	2 Cyl. / 35.2 cu in	20"	White	Tiller	Rope	Manual Tilt
25	E25DTEIIR	2011	2 Cyl. / 35.2 cu in	15"	Blue	Tiller	Rope/Electric	Manual Tilt
25	E25DTEIIG	2011	2 Cyl. / 35.2 cu in	15"	Blue	Tiller	Rope/Electric	Manual Tilt
25	E25DTEIIH	2011	2 Cyl. / 35.2 cu in	15"	Blue	Tiller	Rope/Electric	Manual Tilt
25	E25DTELIIR	2011	2 Cyl. / 35.2 cu in	20"	Blue	Tiller	Rope/Electric	Manual Tilt
25	E25DTELIH	2011	2 Cyl. / 35.2 cu in	20"	Blue	Tiller	Rope/Electric	Manual Tilt
25	E25TESLIIS	2011	2 Cyl. / 35.2 cu in	20"	White	Tiller	Rope/Electric	Manual Tilt
25	E25TESLIH	2011	2 Cyl. / 35.2 cu in	20"	White	Tiller	Rope/Electric	Manual Tilt
25	E25DELIIR	2011	2 Cyl. / 35.2 cu in	20"	Blue	Remote	Rope/Electric	Manual Tilt
25	E25DELIH	2011	2 Cyl. / 35.2 cu in	20"	Blue	Remote	Rope/Electric	Manual Tilt
25	E25DPLIIR	2011	2 Cyl. / 35.2 cu in	20"	Blue	Remote	Rope/Electric	Power Tilt
25	E25DPLIIG	2011	2 Cyl. / 35.2 cu in	20"	Blue	Remote	Rope/Electric	Power Tilt
25	E25DPLIIH	2011	2 Cyl. / 35.2 cu in	20"	Blue	Remote	Rope/Electric	Power Tilt
25	E25DPSLIIS	2011	2 Cyl. / 35.2 cu in	20"	White	Remote	Rope/Electric	Power Tilt
25	E25DPSLIH	2011	2 Cyl. / 35.2 cu in	20"	White	Remote	Rope/Electric	Power Tilt

## Evinrude and Johnson Outboards 2005 - 2012

Horsepower	Model Number	Model Year	Engine	Shaft Length	Color	Steering	Starting	Midsection
25	E25DTLIIR	2011	2 Cyl. / 35.2 cu in	20"	Blue	Tiller	Rope/Electric	Power Tilt
25	E25DTLIH	2011	2 Cyl. / 35.2 cu in	20"	Blue	Tiller	Rope/Electric	Power Tilt
25	E25DTSIIIS	2011	2 Cyl. / 35.2 cu in	20"	White	Tiller	Rope/Electric	Power Tilt
25	E25DTSIIH	2011	2 Cyl. / 35.2 cu in	20"	White	Tiller	Rope/Electric	Power Tilt
25	E25DRISC	2010	2 Cyl. / 35.2 cu in	15"	Blue	Tiller	Rope	Manual Tilt
25	E25DRLISC	2010	2 Cyl. / 35.2 cu in	20"	Blue	Tiller	Rope	Manual Tilt
25	E25DTEISC	2010	2 Cyl. / 35.2 cu in	15"	Blue	Tiller	Rope/Electric	Manual Tilt
25	E25DTELISC	2010	2 Cyl. / 35.2 cu in	20"	Blue	Tiller	Rope/Electric	Manual Tilt
25	E25DELISC	2010	2 Cyl. / 35.2 cu in	20"	Blue	Remote	Rope/Electric	Manual Tilt
25	E25DPLISC	2010	2 Cyl. / 35.2 cu in	20"	Blue	Remote	Rope/Electric	Power Tilt
25	E25DTLISC	2010	2 Cyl. / 35.2 cu in	20"	Blue	Tiller	Rope/Electric	Power Tilt
25	E25DRSES	2009	2 Cyl. / 35.2 cu in	15"	Blue	Tiller	Rope	Manual Tilt
25	E25DRLSES	2009	2 Cyl. / 35.2 cu in	20"	Blue	Tiller	Rope	Manual Tilt
25	E25DTESES	2009	2 Cyl. / 35.2 cu in	15"	Blue	Tiller	Rope/Electric	Manual Tilt
25	E25DELSES	2009	2 Cyl. / 35.2 cu in	20"	Blue	Tiller	Rope/Electric	Manual Tilt
25	E25DLSSES	2009	2 Cyl. / 35.2 cu in	20"	Blue	Remote	Rope/Electric	Manual Tilt
25	E25DTLSES	2009	2 Cyl. / 35.2 cu in	20"	Blue	Remote	Rope/Electric	Power Tilt
25	E25DPLSES	2009	2 Cyl. / 35.2 cu in	20"	Blue	Tiller	Rope/Electric	Power Tilt
25	J25R4SUR	2007	2 Cyl. / 32.8 cu in	15"	White	Tiller	Rope	Manual Tilt
25	BJ25R4SUC	2007	2 Cyl. / 32.8 cu in	15"	White	Tiller	Rope	Manual Tilt
25	J25RL4SUR	2007	2 Cyl. / 32.8 cu in	20"	White	Tiller	Rope	Manual Tilt
25	BJ25RL4SUC	2007	2 Cyl. / 32.8 cu in	20"	White	Tiller	Rope	Manual Tilt
25	J25TE4SUR	2007	2 Cyl. / 32.8 cu in	15"	White	Tiller	Electric	Manual Tilt
25	BJ25TE4SUC	2007	2 Cyl. / 32.8 cu in	15"	White	Tiller	Electric	Manual Tilt
25	J25TEL4SUR	2007	2 Cyl. / 32.8 cu in	20"	White	Tiller	Electric	Manual Tilt
25	BJ25TL4SUC	2007	2 Cyl. / 32.8 cu in	20"	White	Tiller	Electric	Manual Tilt
25	J25E4SUR	2007	2 Cyl. / 32.8 cu in	15"	White	Remote	Electric	Manual Tilt
25	BJ25E4SUC	2007	2 Cyl. / 32.8 cu in	15"	White	Remote	Electric	Manual Tilt
25	J25EL4SUR	2007	2 Cyl. / 32.8 cu in	20"	White	Remote	Electric	Manual Tilt
25	BJ25EL4SUC	2007	2 Cyl. / 32.8 cu in	20"	White	Remote	Electric	Manual Tilt
25	J25R4SDC	2006	2 Cyl. / 32.8 cu in	15"	White	Tiller	Rope	Manual Tilt
25	BJ25R4SDS	2006	2 Cyl. / 32.8 cu in	15"	White	Tiller	Rope	Manual Tilt
25	J25RL4SDC	2006	2 Cyl. / 32.8 cu in	20"	White	Tiller	Rope	Manual Tilt
25	BJ25RL4SDS	2006	2 Cyl. / 32.8 cu in	20"	White	Tiller	Rope	Manual Tilt
25	J25TE4SDC	2006	2 Cyl. / 32.8 cu in	15"	White	Tiller	Electric	Manual Tilt
25	BJ25TE4SDS	2006	2 Cyl. / 32.8 cu in	15"	White	Tiller	Electric	Manual Tilt
25	J25TEL4SDC	2006	2 Cyl. / 32.8 cu in	20"	White	Tiller	Electric	Manual Tilt
25	BJ25TEL4SDS	2006	2 Cyl. / 32.8 cu in	20"	White	Tiller	Electric	Manual Tilt
25	J25E4SDC	2006	2 Cyl. / 32.8 cu in	15"	White	Remote	Electric	Manual Tilt
25	BJ25E4SDS	2006	2 Cyl. / 32.8 cu in	15"	White	Remote	Electric	Manual Tilt
25	J25EL4SDC	2006	2 Cyl. / 32.8 cu in	20"	White	Remote	Electric	Manual Tilt
25	BJ25EL4SDS	2006	2 Cyl. / 32.8 cu in	20"	White	Remote	Electric	Manual Tilt
25	J25R5SOA	2005	2 Cyl. / 31.8 cu in	15"	White	Tiller	Rope	Manual Tilt
25	J25RL5SOA	2005	2 Cyl. / 31.8 cu in	20"	White	Tiller	Rope	Manual Tilt
25	J25WRSOB	2005	2 Cyl. / 31.8 cu in	15"	Smoke	Tiller	Rope	Manual Tilt
25	J25WRLSOB	2005	2 Cyl. / 31.8 cu in	20"	Smoke	Tiller	Rope	Manual Tilt
25	J25RTSOS	2005	2 Cyl. / 31.8 cu in	20"	White	Tiller	Rope	Manual Tilt
25	J25TESOM	2005	2 Cyl. / 31.8 cu in	15"	White	Tiller	Electric	Manual Tilt
25	J25TELSOM	2005	2 Cyl. / 31.8 cu in	20"	White	Tiller	Electric	Manual Tilt
25	J25GTESOC	2005	2 Cyl. / 31.8 cu in	15"	Smoke	Tiller	Electric	Manual Tilt
25	J25ELSOB	2005	2 Cyl. / 31.8 cu in	20"	White	Remote	Electric	Manual Tilt
25	J25R4SOS	2005	2 Cyl. / 53.8 cu in	15"	White	Tiller	Rope	Manual Tilt
25	J25RL4SOS	2005	2 Cyl. / 53.8 cu in	20"	White	Tiller	Rope	Manual Tilt
25	J25TE4SOS	2005	2 Cyl. / 53.8 cu in	15"	White	Tiller	Electric	Manual Tilt
25	J25TEL4SOS	2005	2 Cyl. / 53.8 cu in	20"	White	Tiller	Electric	Manual Tilt
25	J25E4SOS	2005	2 Cyl. / 53.8 cu in	15"	White	Remote	Electric	Manual Tilt
25	J25EL4SOS	2005	2 Cyl. / 53.8 cu in	20"	White	Remote	Electric	Manual Tilt
25	J25TEL4SOC	2005	3 Cyl. / 36.4 cu in	20"	White	Tiller	Electric	Manual Tilt
25	J25PL4SOC	2005	3 Cyl. / 36.4 cu in	20"	White	Remote	Electric	Power Tilt
30	E30DRINA	2012	2 Cyl. / 35.2 cu in	15"	Blue	Tiller	Rope	Manual Tilt
30	E30DRSINC	2012	2 Cyl. / 35.2 cu in	15"	White	Tiller	Rope	Manual Tilt
30	E30DRLINA	2012	2 Cyl. / 35.2 cu in	20"	Blue	Tiller	Rope	Manual Tilt
30	E30DRSLINC	2012	2 Cyl. / 35.2 cu in	20"	White	Tiller	Rope	Manual Tilt
30	E30DTELINA	2012	2 Cyl. / 35.2 cu in	20"	Blue	Tiller	Rope/Electric	Manual Tilt
30	E30TESLINC	2012	2 Cyl. / 35.2 cu in	20"	White	Tiller	Rope/Electric	Manual Tilt
30	E30DELINA	2012	2 Cyl. / 35.2 cu in	20"	Blue	Remote	Rope/Electric	Manual Tilt
30	E30DPLINA	2012	2 Cyl. / 35.2 cu in	20"	Blue	Remote	Rope/Electric	Power Tilt
30	E30DPSLINC	2012	2 Cyl. / 35.2 cu in	20"	White	Remote	Rope/Electric	Power Tilt
30	E30DTLINA	2012	2 Cyl. / 35.2 cu in	20"	Blue	Tiller	Rope/Electric	Power Tilt
30	E30DTSLINC	2012	2 Cyl. / 35.2 cu in	20"	White	Tiller	Rope/Electric	Power Tilt



## Evinrude and Johnson Outboards 2005 - 2012

Horsepower	Model Number	Model Year	Engine	Shaft Length	Color	Steering	Starting	Midsection
30	E30MRLINS	2012	2 Cyl. / 35.2 cu in	20"	Black	Tiller	Rope	Manual Tilt
30	E30DRIIR	2011	2 Cyl. / 35.2 cu in	15"	Blue	Tiller	Rope	Manual Tilt
30	E30DRIIG	2011	2 Cyl. / 35.2 cu in	15"	Blue	Tiller	Rope	Manual Tilt
30	E30DRIIH	2011	2 Cyl. / 35.2 cu in	15"	Blue	Tiller	Rope	Manual Tilt
30	E30DRSIIS	2011	2 Cyl. / 35.2 cu in	15"	White	Tiller	Rope	Manual Tilt
30	E30DRSIH	2011	2 Cyl. / 35.2 cu in	15"	White	Tiller	Rope	Manual Tilt
30	E30DRLIIR	2011	2 Cyl. / 35.2 cu in	20"	Blue	Tiller	Rope	Manual Tilt
30	E30DRLIIG	2011	2 Cyl. / 35.2 cu in	20"	Blue	Tiller	Rope	Manual Tilt
30	E30DRLIHH	2011	2 Cyl. / 35.2 cu in	20"	Blue	Tiller	Rope	Manual Tilt
30	E30DRSLIIS	2011	2 Cyl. / 35.2 cu in	20"	White	Tiller	Rope	Manual Tilt
30	E30DRSLIHH	2011	2 Cyl. / 35.2 cu in	20"	White	Tiller	Rope	Manual Tilt
30	E30DTELIIR	2011	2 Cyl. / 35.2 cu in	20"	Blue	Tiller	Rope/Electric	Manual Tilt
30	E30DTELIHH	2011	2 Cyl. / 35.2 cu in	20"	Blue	Tiller	Rope/Electric	Manual Tilt
30	E30TESLIIS	2011	2 Cyl. / 35.2 cu in	20"	White	Tiller	Rope/Electric	Manual Tilt
30	E30TESLIHH	2011	2 Cyl. / 35.2 cu in	20"	White	Tiller	Rope/Electric	Manual Tilt
30	E30DELIIR	2011	2 Cyl. / 35.2 cu in	20"	Blue	Remote	Rope/Electric	Manual Tilt
30	E30DELIHH	2011	2 Cyl. / 35.2 cu in	20"	Blue	Remote	Rope/Electric	Manual Tilt
30	E30DPLIIR	2011	2 Cyl. / 35.2 cu in	20"	Blue	Remote	Rope/Electric	Power Tilt
30	E30DPLIHH	2011	2 Cyl. / 35.2 cu in	20"	Blue	Remote	Rope/Electric	Power Tilt
30	E30DPSLIIS	2011	2 Cyl. / 35.2 cu in	20"	White	Remote	Rope/Electric	Power Tilt
30	E30DPSLIHH	2011	2 Cyl. / 35.2 cu in	20"	White	Remote	Rope/Electric	Power Tilt
30	E30DTLIIR	2011	2 Cyl. / 35.2 cu in	20"	Blue	Tiller	Rope/Electric	Power Tilt
30	E30DTLIHH	2011	2 Cyl. / 35.2 cu in	20"	Blue	Tiller	Rope/Electric	Power Tilt
30	E30DTSLIIS	2011	2 Cyl. / 35.2 cu in	20"	White	Tiller	Rope/Electric	Power Tilt
30	E30DTSLIHH	2011	2 Cyl. / 35.2 cu in	20"	White	Tiller	Rope/Electric	Power Tilt
30	E30DRISC	2010	2 Cyl. / 35.2 cu in	15"	Blue	Tiller	Rope	Manual Tilt
30	E30DRLISC	2010	2 Cyl. / 35.2 cu in	20"	Blue	Tiller	Rope	Manual Tilt
30	E30DTELISC	2010	2 Cyl. / 35.2 cu in	20"	Blue	Tiller	Rope/Electric	Manual Tilt
30	E30DELISC	2010	2 Cyl. / 35.2 cu in	20"	Blue	Remote	Rope/Electric	Manual Tilt
30	E30DPLISC	2010	2 Cyl. / 35.2 cu in	20"	Blue	Remote	Rope/Electric	Power Tilt
30	E30DTLISC	2010	2 Cyl. / 35.2 cu in	20"	Blue	Tiller	Rope/Electric	Power Tilt
30	E30DRSES	2009	2 Cyl. / 35.2 cu in	15"	Blue	Tiller	Rope	Manual Tilt
30	E30DRLSES	2009	2 Cyl. / 35.2 cu in	20"	Blue	Tiller	Rope	Manual Tilt
30	E30DTELSSES	2009	2 Cyl. / 35.2 cu in	20"	Blue	Tiller	Rope/Electric	Manual Tilt
30	E30DELSES	2009	2 Cyl. / 35.2 cu in	20"	Blue	Remote	Rope/Electric	Manual Tilt
30	E30DTLSSES	2009	2 Cyl. / 35.2 cu in	20"	Blue	Remote	Rope/Electric	Power Tilt
30	E30DPLSES	2009	2 Cyl. / 35.2 cu in	20"	Blue	Tiller	Rope/Electric	Power Tilt
30	J30TEL4SUA	2007	3 Cyl. / 36.4 cu in	20"	White	Tiller	Electric	Manual Tilt
30	J30PL4SUA	2007	3 Cyl. / 36.4 cu in	20"	White	Remote	Electric	Power Tilt
30	J30TEL4SDR	2006	3 Cyl. / 36.4 cu in	20"	White	Tiller	Electric	Manual Tilt
30	J30PL4SDR	2006	3 Cyl. / 36.4 cu in	20"	White	Remote	Electric	Power Tilt
30	J30RSOD	2005	2 Cyl. / 31.8 cu in	15"	White	Tiller	Rope	Manual Tilt
30	J30RLSOD	2005	2 Cyl. / 31.8 cu in	20"	White	Tiller	Rope	Manual Tilt
30	J30MLSOR	2005	2 Cyl. / 31.8 cu in	20"	GR	Tiller	Rope	Manual Tilt
30	J30ELSOD	2005	2 Cyl. / 31.8 cu in	20"	White	Remote	Electric	Manual Tilt
30	J30TEL4SOC	2005	3 Cyl. / 36.4 cu in	20"	White	Tiller	Electric	Manual Tilt
30	J30PL4SOC	2005	3 Cyl. / 36.4 cu in	20"	White	Remote	Electric	Power Tilt
40	E40DRLINC	2012	2 Cyl. / 52.7 cu in	20"	Blue	Tiller	Rope	Manual Tilt
40	E40DPLINC	2012	2 Cyl. / 52.7 cu in	20"	Blue	Remote	Electric	Power Tilt
40	E40DSLINM	2012	2 Cyl. / 52.7 cu in	20"	White	Remote	Electric	Power Tilt
40	E40DTLINM	2012	2 Cyl. / 52.7 cu in	20"	Blue	Tiller	Electric	Power Tilt
40	E40DRLIIS	2011	2 Cyl. / 52.7 cu in	20"	Blue	Tiller	Rope	Manual Tilt
40	E40DPLIIS	2011	2 Cyl. / 52.7 cu in	20"	Blue	Remote	Electric	Power Tilt
40	E40DSLIIA	2011	2 Cyl. / 52.7 cu in	20"	White	Remote	Electric	Power Tilt
40	E40DTLIIA	2011	2 Cyl. / 52.7 cu in	20"	Blue	Tiller	Electric	Power Tilt
40	E40DRLISD	2010	2 Cyl. / 52.7 cu in	20"	Blue	Tiller	Rope	Manual Tilt
40	E40DRLISF	2010	2 Cyl. / 52.7 cu in	20"	Blue	Tiller	Rope	Manual Tilt
40	E40DPLISD	2010	2 Cyl. / 52.7 cu in	20"	Blue	Remote	Electric	Power Tilt
40	E40DPLISF	2010	2 Cyl. / 52.7 cu in	20"	Blue	Remote	Electric	Power Tilt
40	E40DSLISR	2010	2 Cyl. / 52.7 cu in	20"	White	Remote	Electric	Power Tilt
40	E40DSLISF	2010	2 Cyl. / 52.7 cu in	20"	White	Remote	Electric	Power Tilt
40	E40DTLISR	2010	2 Cyl. / 52.7 cu in	20"	Blue	Tiller	Electric	Power Tilt
40	E40DTLISF	2010	2 Cyl. / 52.7 cu in	20"	Blue	Tiller	Electric	Power Tilt
40	E40DRLSEE	2009	2 Cyl. / 52.7 cu in	20"	Blue	Tiller	Rope	Manual Tilt
40	E40DTLSEC	2009	2 Cyl. / 52.7 cu in	20"	Blue	Tiller	Electric	Power Tilt
40	E40DPLSEE	2009	2 Cyl. / 52.7 cu in	20"	Blue	Remote	Electric	Power Tilt
40	E40DSLSEC	2009	2 Cyl. / 52.7 cu in	20"	White	Remote	Electric	Power Tilt
40	E40DRLSCB	2008	2 Cyl. / 52.7 cu in	20"	Blue	Tiller	Rope	Manual Tilt
40	E40DPLSCB	2008	2 Cyl. / 52.7 cu in	20"	Blue	Remote	Electric	Power Tilt
40	E40DSLSCS	2008	2 Cyl. / 52.7 cu in	20"	White	Remote	Electric	Power Tilt



## Evinrude and Johnson Outboards 2005 - 2012

Horsepower	Model Number	Model Year	Engine	Shaft Length	Color	Steering	Starting	Midsection
40	E40DTLSCS	2008	2 Cyl. / 52.7 cu in	20"	Blue	Tiller	Electric	Power Tilt
40	E40DRLSUM	2007	2 Cyl. / 52.7 cu in	20"	Blue	Tiller	Rope	Manual Tilt
40	E40DPLSUM	2007	2 Cyl. / 52.7 cu in	20"	Blue	Remote	Electric	Power Tilt
40	J40PL4SDE	2006	3 Cyl. / 49.7 cu in	20"	White	Remote	Electric	Power Tilt
40	BJ40PL4SDR	2006	3 Cyl. / 49.7 cu in	20"	White	Remote	Electric	Power Tilt
40	E40DRLSDA	2006	2 Cyl. / 52.7 cu in	20"	Blue	Tiller	Rope	Manual Tilt
40	E40DPLSDA	2006	2 Cyl. / 52.7 cu in	20"	Blue	Remote	Electric	Power Tilt
40	E40DELSDA	2006	2 Cyl. / 52.7 cu in	20"	Blue	Remote	Electric	Manual Tilt
40	J40RSOC	2005	2 Cyl. / 45.0 cu in	15"	White	Tiller	Rope	Manual Tilt
40	J40RLSOC	2005	2 Cyl. / 45.0 cu in	20"	White	Tiller	Rope	Manual Tilt
40	J40PLSOC	2005	2 Cyl. / 45.0 cu in	20"	White	Remote	Electric	Power Tilt
40	J40PL4SOB	2005	3 Cyl. / 49.7 cu in	20"	White	Remote	Electric	Power Tilt
40	BJ40PL4SOC	2005	3 Cyl. / 49.7 cu in	20"	White	Remote	Electric	Power Tilt
40	E40DRLSOR	2005	2 Cyl. / 52.7 cu in	20"	Blue	Tiller	Rope	Manual Tilt
40	E40DELSOR	2005	2 Cyl. / 52.7 cu in	20"	Blue	Remote	Electric	Manual Tilt
40	E40DPLSOR	2005	2 Cyl. / 52.7 cu in	20"	Blue	Remote	Electric	Power Tilt
50	E50DPLINC	2012	2 Cyl. / 52.7 cu in	20"	Blue	Remote	Electric	Power Tilt
50	E50DSLINM	2012	2 Cyl. / 52.7 cu in	20"	White	Remote	Electric	Power Tilt
50	E50DTLINM	2012	2 Cyl. / 52.7 cu in	20"	Blue	Tiller	Electric	Power Tilt
50	E50DPLIIS	2011	2 Cyl. / 52.7 cu in	20"	Blue	Remote	Electric	Power Tilt
50	E50DSLIIA	2011	2 Cyl. / 52.7 cu in	20"	White	Remote	Electric	Power Tilt
50	E50DTLIIA	2011	2 Cyl. / 52.7 cu in	20"	Blue	Tiller	Electric	Power Tilt
50	E50DPLISD	2010	2 Cyl. / 52.7 cu in	20"	Blue	Remote	Electric	Power Tilt
50	E50DPLISF	2010	2 Cyl. / 52.7 cu in	20"	Blue	Remote	Electric	Power Tilt
50	E50DSLISR	2010	2 Cyl. / 52.7 cu in	20"	White	Remote	Electric	Power Tilt
50	E50DSLISF	2010	2 Cyl. / 52.7 cu in	20"	White	Remote	Electric	Power Tilt
50	E50DTLISR	2010	2 Cyl. / 52.7 cu in	20"	Blue	Tiller	Electric	Power Tilt
50	E50DTLISF	2010	2 Cyl. / 52.7 cu in	20"	Blue	Tiller	Electric	Power Tilt
50	E50DTLSEC	2009	2 Cyl. / 52.7 cu in	20"	Blue	Tiller	Electric	Power Tilt
50	E50DSLSEC	2009	2 Cyl. / 52.7 cu in	20"	White	Tiller	Electric	Power Tilt
50	E50DPLSEE	2009	2 Cyl. / 52.7 cu in	20"	Blue	Remote	Electric	Power Tilt
50	E50DPLSCB	2008	2 Cyl. / 52.7 cu in	20"	Blue	Remote	Electric	Power Tilt
50	E50DSLSCS	2008	2 Cyl. / 52.7 cu in	20"	White	Remote	Electric	Power Tilt
50	E50DTLSCS	2008	2 Cyl. / 52.7 cu in	20"	Blue	Tiller	Electric	Power Tilt
50	E50DPLSUM	2007	2 Cyl. / 52.7 cu in	20"	Blue	Remote	Electric	Power Tilt
50	E50MDRLSUC	2007	2 Cyl. / 52.7 cu in	20"	Black	Tiller	Rope	Manual Tilt
50	J50PL4SDE	2006	3 Cyl. / 49.7 cu in	20"	White	Remote	Electric	Power Tilt
50	BJ50PL4SDR	2006	3 Cyl. / 49.7 cu in	20"	White	Remote	Electric	Power Tilt
50	E50MDRLSDZ	2006	2 Cyl. / 52.7 cu in	20"	Black	Tiller	Rope	Manual Tilt
50	E50MDRLSDS	2006	2 Cyl. / 52.7 cu in	20"	Black	Tiller	Rope	Manual Tilt
50	E50DPLSDA	2006	2 Cyl. / 52.7 cu in	20"	Blue	Remote	Electric	Power Tilt
50	J50PLSOC	2005	2 Cyl. / 45.0 cu in	20"	White	Remote	Electric	Power Tilt
50	J50PL4SOB	2005	3 Cyl. / 49.7 cu in	20"	White	Remote	Electric	Power Tilt
50	BJ50PL4SOC	2005	3 Cyl. / 49.7 cu in	20"	White	Remote	Electric	Power Tilt
50	E50DPLSOR	2005	2 Cyl. / 52.7 cu in	20"	Blue	Remote	Electric	Power Tilt
55	J55APRLSOM	2005	2 Cyl. / 45.0 cu in	20"	Black	Tiller	Rope	Manual Tilt
55	J55MLSOR	2005	2 Cyl. / 45.0 cu in	20"	Black	Tiller	Rope	Manual Tilt
55	J55WRLSOE	2005	2 Cyl. / 45.0 cu in	20"	Smoke	Tiller	Rope	Manual Tilt
55	J55WRYSOB	2005	2 Cyl. / 45.0 cu in	22.5"	Smoke	Tiller	Rope	Manual Tilt
55	E55MRLINB	2012	2 Cyl. / 52.7 cu in	20"	Black	Tiller	Rope	Manual Tilt
55	E55MJRLINB	2012	2 Cyl. / 52.7 cu in	20"	Black	Tiller	Rope	Manual Tilt
55	E55MRLIIM	2011	2 Cyl. / 52.7 cu in	20"	Black	Tiller	Rope	Manual Tilt
55	E55MJRLIIM	2011	2 Cyl. / 52.7 cu in	20"	Black	Tiller	Rope	Manual Tilt
55	E55MRLISA	2010	2 Cyl. / 52.7 cu in	20"	Black	Tiller	Rope	Manual Tilt
55	E55MJRLISA	2010	2 Cyl. / 52.7 cu in	20"	Black	Tiller	Rope	Manual Tilt
55	E55MRLSER	2009	2 Cyl. / 52.7 cu in	20"	Black	Remote	Rope	Manual Tilt
55	E55MJRLSER	2009	2 Cyl. / 52.7 cu in	20"	Black	Tiller	Rope	Manual Tilt
55	E55MRLSCC	2008	2 Cyl. / 52.7 cu in	20"	Black	Tiller	Rope	Manual Tilt
55	E55MJRLSCC	2008	2 Cyl. / 52.7 cu in	20"	Black	Tiller	Rope	Manual Tilt
60	E60DPLINC	2012	2 Cyl. / 52.7 cu in	20"	Blue	Remote	Electric	Power Tilt
60	E60DSLINM	2012	2 Cyl. / 52.7 cu in	20"	White	Remote	Electric	Power Tilt
60	E60DTLINM	2012	2 Cyl. / 52.7 cu in	20"	Blue	Tiller	Electric	Power Tilt
60	E60DPLIIS	2011	2 Cyl. / 52.7 cu in	20"	Blue	Remote	Electric	Power Tilt
60	E60DSLIIA	2011	2 Cyl. / 52.7 cu in	20"	White	Remote	Electric	Power Tilt
60	E60DTLIIA	2011	2 Cyl. / 52.7 cu in	20"	Blue	Tiller	Electric	Power Tilt
60	E60DPLISD	2010	2 Cyl. / 52.7 cu in	20"	Blue	Remote	Electric	Power Tilt
60	E60DPLISF	2010	2 Cyl. / 52.7 cu in	20"	Blue	Remote	Electric	Power Tilt
60	E60DSLISR	2010	2 Cyl. / 52.7 cu in	20"	White	Remote	Electric	Power Tilt
60	E60DSLISF	2010	2 Cyl. / 52.7 cu in	20"	White	Remote	Electric	Power Tilt
60	E60DTLISR	2010	2 Cyl. / 52.7 cu in	20"	Blue	Tiller	Electric	Power Tilt

## Evinrude and Johnson Outboards 2005 - 2012

Horsepower	Model Number	Model Year	Engine	Shaft Length	Color	Steering	Starting	Midsection
60	E60DTLISF	2010	2 Cyl. / 52.7 cu in	20"	Blue	Tiller	Electric	Power Tilt
60	E60DTLSEC	2009	2 Cyl. / 52.7 cu in	20"	Blue	Tiller	Electric	Power Tilt
60	E60DPLSEE	2009	2 Cyl. / 52.7 cu in	20"	Blue	Remote	Electric	Power Tilt
60	E60DSLSEC	2009	2 Cyl. / 52.7 cu in	20"	White	Remote	Electric	Power Tilt
60	E60DPLSCB	2008	2 Cyl. / 52.7 cu in	20"	Blue	Remote	Electric	Power Tilt
60	E60DSLSCS	2008	2 Cyl. / 52.7 cu in	20"	White	Remote	Electric	Power Tilt
60	E60DTLSCS	2008	2 Cyl. / 52.7 cu in	20"	Blue	Tiller	Electric	Power Tilt
60	E60DPLSUM	2007	2 Cyl. / 52.7 cu in	20"	Blue	Remote	Electric	Power Tilt
60	E60DPLSDA	2006	2 Cyl. / 52.7 cu in	20"	Blue	Remote	Electric	Power Tilt
60	J60PL4SDM	2006	4 Cyl. / 79.2 cu in	20"	White	Remote	Electric	Power Tilt
60	BJ60PL4SDM	2006	4 Cyl. / 79.2 cu in	20"	White	Remote	Electric	Power Tilt
60	E60DPLSOR	2005	2 Cyl. / 52.7 cu in	20"	Blue	Remote	Electric	Power Tilt
60	E60WDRLSOS	2005	2 Cyl. / 52.7 cu in	20"	Blue	Tiller	Rope	Manual Tilt
60	E60WDRLSOS	2005	2 Cyl. / 52.7 cu in	22.5"	Blue	Tiller	Rope	Manual Tilt
60	J60PL4SOA	2005	4 Cyl. / 79.2 cu in	20"	White	Remote	Electric	Power Tilt
60	BJ60PL4SOA	2005	4 Cyl. / 79.2 cu in	20"	White	Remote	Electric	Power Tilt
65	E65WDRLINM	2012	2 Cyl. / 52.7 cu in	20"	Blue	Tiller	Rope	Manual Tilt
65	E65WDRLINM	2012	2 Cyl. / 52.7 cu in	22.5"	Blue	Tiller	Rope	Manual Tilt
65	E65WDRLIIA	2011	2 Cyl. / 52.7 cu in	20"	Blue	Tiller	Rope	Manual Tilt
65	E65WDRLIIA	2011	2 Cyl. / 52.7 cu in	22.5"	Blue	Tiller	Rope	Manual Tilt
65	E65WDRLISR	2010	2 Cyl. / 52.7 cu in	20"	Blue	Tiller	Rope	Manual Tilt
65	E65WDRLISF	2010	2 Cyl. / 52.7 cu in	20"	Blue	Tiller	Rope	Manual Tilt
65	E65WDRLISR	2010	2 Cyl. / 52.7 cu in	22.5"	Blue	Tiller	Rope	Manual Tilt
65	E65WDRLISF	2010	2 Cyl. / 52.7 cu in	22.5"	Blue	Tiller	Rope	Manual Tilt
65	E65WDRLSEC	2009	2 Cyl. / 52.7 cu in	20"	Blue	Tiller	Rope	Manual Tilt
65	E65WDRLSEC	2009	2 Cyl. / 52.7 cu in	22.5"	Blue	Tiller	Rope	Manual Tilt
65	E65WDRLSCS	2008	2 Cyl. / 52.7 cu in	20"	Blue	Tiller	Rope	Manual Tilt
65	E65WDRLSCS	2008	2 Cyl. / 52.7 cu in	22.5"	Blue	Tiller	Rope	Manual Tilt
65	E65JDPLSOS	2005	3 Cyl. / 79.0 cu in	20"	Blue	Remote	Electric	Power Tilt
70	E70DPLSOS	2005	2 Cyl. / 52.7 cu in	20"	Blue	Remote	Electric	Power Tilt
70	J70PL4SOA	2005	4 Cyl. / 79.2 cu in	20"	White	Remote	Electric	Power Tilt
70	BJ70PL4SOA	2005	4 Cyl. / 79.2 cu in	20"	White	Remote	Electric	Power Tilt
70	J70PL4SDM	2006	4 Cyl. / 79.2 cu in	20"	White	Remote	Electric	Power Tilt
70	BJ70PL4SDM	2006	4 Cyl. / 79.2 cu in	20"	White	Remote	Electric	Power Tilt
75	E75DPLINC	2012	3 Cyl. / 79.1 cu in	20"	Blue	Remote	Electric	Power Tilt
75	E75DSLINM	2012	3 Cyl. / 79.1 cu in	20"	White	Remote	Electric	Power Tilt
75	E75DPLIIS	2011	3 Cyl. / 79.1 cu in	20"	Blue	Remote	Electric	Power Tilt
75	E75DPLIIA	2011	3 Cyl. / 79.1 cu in	20"	White	Remote	Electric	Power Tilt
75	E75DPLISD	2010	3 Cyl. / 79.1 cu in	20"	Blue	Remote	Electric	Power Tilt
75	E75DPLISF	2010	3 Cyl. / 79.1 cu in	20"	Blue	Remote	Electric	Power Tilt
75	E75DPLISR	2010	3 Cyl. / 79.1 cu in	20"	White	Remote	Electric	Power Tilt
75	E75DPLISF	2010	3 Cyl. / 79.1 cu in	20"	White	Remote	Electric	Power Tilt
75	E75DPLSEE	2009	3 Cyl. / 79.1 cu in	20"	Blue	Remote	Electric	Power Tilt
75	E75DSLSEC	2009	3 Cyl. / 79.1 cu in	20"	White	Remote	Electric	Power Tilt
75	E75DPLSCB	2008	3 Cyl. / 79.1 cu in	20"	Blue	Remote	Electric	Power Tilt
75	E75DSLSCS	2008	3 Cyl. / 79.1 cu in	20"	White	Remote	Electric	Power Tilt
75	E75DPLSUM	2007	3 Cyl. / 79.0 cu in	20"	Blue	Remote	Electric	Power Tilt
75	E75DPLSDA	2006	3 Cyl. / 79.0 cu in	20"	Blue	Remote	Electric	Power Tilt
75	E75DPLSOR	2005	3 Cyl. / 79.0 cu in	20"	Blue	Remote	Electric	Power Tilt
90	E90DPLINC	2012	3 Cyl. / 79.1 cu in	20"	Blue	Remote	Electric	Power Tilt
90	BE90DPLINB	2012	3 Cyl. / 79.1 cu in	20"	Blue	Remote	Electric	Power Tilt
90	E90DPXINC	2012	3 Cyl. / 79.1 cu in	25"	White	Remote	Electric	Power Tilt
90	BE90DPXINB	2012	3 Cyl. / 79.1 cu in	25"	White	Remote	Electric	Power Tilt
90	E90DSLINS	2012	3 Cyl. / 79.1 cu in	20"	White	Remote	Electric	Power Tilt
90	BE90DSLINB	2012	3 Cyl. / 79.1 cu in	20"	White	Remote	Electric	Power Tilt
90	E90WDELINM	2012	3 Cyl. / 79.1 cu in	20"	Blue	Remote	Electric	Manual Tilt
90	BE90WELINM	2012	3 Cyl. / 79.1 cu in	20"	Blue	Remote	Electric	Manual Tilt
90	E90WDEXINM	2012	3 Cyl. / 79.1 cu in	25"	White	Remote	Electric	Manual Tilt
90	BE90WEXINM	2012	3 Cyl. / 79.1 cu in	25"	White	Remote	Electric	Manual Tilt
90	E90DPLIIS	2011	3 Cyl. / 79.1 cu in	20"	Blue	Remote	Electric	Power Tilt
90	BE90DPLIIM	2011	3 Cyl. / 79.1 cu in	20"	Blue	Remote	Electric	Power Tilt
90	E90DPXIIS	2011	3 Cyl. / 79.1 cu in	25"	White	Remote	Electric	Power Tilt
90	BE90DPXIIM	2011	3 Cyl. / 79.1 cu in	25"	White	Remote	Electric	Power Tilt
90	E90DSLIID	2011	3 Cyl. / 79.1 cu in	20"	White	Remote	Electric	Power Tilt
90	BE90DSLIIIM	2011	3 Cyl. / 79.1 cu in	20"	White	Remote	Electric	Power Tilt
90	E90WDELIIA	2011	3 Cyl. / 79.1 cu in	20"	Blue	Remote	Electric	Manual Tilt
90	BE90WELIIA	2011	3 Cyl. / 79.1 cu in	20"	Blue	Remote	Electric	Manual Tilt
90	E90WDEXIIA	2011	3 Cyl. / 79.1 cu in	25"	White	Remote	Electric	Manual Tilt
90	BE90WEXIIA	2011	3 Cyl. / 79.1 cu in	25"	White	Remote	Electric	Manual Tilt
90	E90DPLISD	2010	3 Cyl. / 79.1 cu in	20"	Blue	Remote	Electric	Power Tilt

## Evinrude and Johnson Outboards 2005 - 2012

Horsepower	Model Number	Model Year	Engine	Shaft Length	Color	Steering	Starting	Midsection
90	E90DPLISF	2010	3 Cyl. / 79.1 cu in	20"	Blue	Remote	Electric	Power Tilt
90	BE90DPLISA	2010	3 Cyl. / 79.1 cu in	20"	Blue	Remote	Electric	Power Tilt
90	BE90DPLISF	2010	3 Cyl. / 79.1 cu in	20"	Blue	Remote	Electric	Power Tilt
90	E90DPXISD	2010	3 Cyl. / 79.1 cu in	25"	White	Remote	Electric	Power Tilt
90	E90DPXISF	2010	3 Cyl. / 79.1 cu in	25"	White	Remote	Electric	Power Tilt
90	BE90DPXISA	2010	3 Cyl. / 79.1 cu in	25"	White	Remote	Electric	Power Tilt
90	BE90DPXISF	2010	3 Cyl. / 79.1 cu in	25"	White	Remote	Electric	Power Tilt
90	E90DSLISE	2010	3 Cyl. / 79.1 cu in	20"	White	Remote	Electric	Power Tilt
90	E90DSLISF	2010	3 Cyl. / 79.1 cu in	20"	White	Remote	Electric	Power Tilt
90	BE90DSLISA	2010	3 Cyl. / 79.1 cu in	20"	White	Remote	Electric	Power Tilt
90	BE90DSLISF	2010	3 Cyl. / 79.1 cu in	20"	White	Remote	Electric	Power Tilt
90	E90WDELISR	2010	3 Cyl. / 79.1 cu in	20"	Blue	Remote	Electric	Manual Tilt
90	E90WDELISF	2010	3 Cyl. / 79.1 cu in	20"	Blue	Remote	Electric	Manual Tilt
90	BE90WELISR	2010	3 Cyl. / 79.1 cu in	20"	Blue	Remote	Electric	Manual Tilt
90	BE90WELISF	2010	3 Cyl. / 79.1 cu in	20"	Blue	Remote	Electric	Manual Tilt
90	E90WDEXISR	2010	3 Cyl. / 79.1 cu in	25"	White	Remote	Electric	Manual Tilt
90	E90WDEXISF	2010	3 Cyl. / 79.1 cu in	25"	White	Remote	Electric	Manual Tilt
90	BE90WEXISR	2010	3 Cyl. / 79.1 cu in	25"	White	Remote	Electric	Manual Tilt
90	BE90WEXISF	2010	3 Cyl. / 79.1 cu in	25"	White	Remote	Electric	Manual Tilt
90	E90DPLSEE	2009	3 Cyl. / 79.1 cu in	20"	Blue	Remote	Electric	Power Tilt
90	BE90DPLSER	2009	3 Cyl. / 79.1 cu in	20"	Blue	Remote	Electric	Power Tilt
90	E90DSLSEB	2009	3 Cyl. / 79.1 cu in	20"	White	Remote	Electric	Power Tilt
90	E90DPXSEE	2009	3 Cyl. / 79.1 cu in	25"	White	Remote	Electric	Power Tilt
90	BE90DPXSER	2009	3 Cyl. / 79.1 cu in	25"	White	Remote	Electric	Power Tilt
90	E90DMXSES	2009	3 Cyl. / 79.1 cu in	25"	Green	Remote	Electric	Power Tilt
90	E90WDELSEC	2009	3 Cyl. / 79.1 cu in	20"	Blue	Remote	Electric	Manual Tilt
90	E90WDEXSEC	2009	3 Cyl. / 79.1 cu in	25"	White	Remote	Electric	Manual Tilt
90	E90DPLSCB	2008	3 Cyl. / 79.1 cu in	20"	Blue	Remote	Electric	Power Tilt
90	BE90DPLSCB	2008	3 Cyl. / 79.1 cu in	20"	Blue	Remote	Electric	Power Tilt
90	E90DPXSCB	2008	3 Cyl. / 79.1 cu in	25"	White	Remote	Electric	Power Tilt
90	BE90DPXSCB	2008	3 Cyl. / 79.1 cu in	25"	White	Remote	Electric	Power Tilt
90	E90DSLSCM	2008	3 Cyl. / 79.1 cu in	20"	White	Remote	Electric	Power Tilt
90	BE90DSLSCM	2008	3 Cyl. / 79.1 cu in	20"	White	Remote	Electric	Manual Tilt
90	E90WDELSCS	2008	3 Cyl. / 79.1 cu in	20"	Blue	Remote	Electric	Manual Tilt
90	BE90WDELSCS	2008	3 Cyl. / 79.1 cu in	20"	Blue	Remote	Electric	Manual Tilt
90	E90WDEXSCS	2008	3 Cyl. / 79.1 cu in	25"	White	Remote	Electric	Manual Tilt
90	BE90WDEXSCS	2008	3 Cyl. / 79.1 cu in	25"	White	Remote	Electric	Manual Tilt
90	E90DPLSUM	2007	3 Cyl. / 79.0 cu in	20"	Blue	Remote	Electric	Power Tilt
90	BE90DPLSUS	2007	3 Cyl. / 79.0 cu in	20"	Blue	Remote	Electric	Power Tilt
90	E90DPXSUM	2007	3 Cyl. / 79.0 cu in	25"	White	Remote	Electric	Power Tilt
90	BE90DPXSUS	2007	3 Cyl. / 79.0 cu in	25"	White	Remote	Electric	Power Tilt
90	E90DLSUA	2007	3 Cyl. / 79.0 cu in	20"	White	Remote	Electric	Power Tilt
90	BE90DLSUS	2007	3 Cyl. / 79.0 cu in	20"	White	Remote	Electric	Power Tilt
90	J90PL4SDA	2006	4 Cyl. / 119.0 cu in	20"	White	Remote	Electric	Power Tilt
90	J90PL4SDG	2006	4 Cyl. / 119.0 cu in	20"	White	Remote	Electric	Power Tilt
90	BJ90PL4SDA	2006	4 Cyl. / 119.0 cu in	20"	White	Remote	Electric	Power Tilt
90	BJ90PL4SDG	2006	4 Cyl. / 119.0 cu in	20"	White	Remote	Electric	Power Tilt
90	J90PX4SDA	2006	4 Cyl. / 119.0 cu in	25"	White	Remote	Electric	Power Tilt
90	J90PX4SDG	2006	4 Cyl. / 119.0 cu in	25"	White	Remote	Electric	Power Tilt
90	BJ90PX4SDA	2006	4 Cyl. / 119.0 cu in	25"	White	Remote	Electric	Power Tilt
90	BJ90PX4SDG	2006	4 Cyl. / 119.0 cu in	25"	White	Remote	Electric	Power Tilt
90	E90DPLSDA	2006	3 Cyl. / 79.0 cu in	20"	Blue	Remote	Electric	Power Tilt
90	E90DPXSDA	2006	3 Cyl. / 79.0 cu in	25"	White	Remote	Electric	Power Tilt
90	E90DSLSDR	2006	3 Cyl. / 79.0 cu in	20"	White	Remote	Electric	Power Tilt
90	J90PLSDM	2006	60° V-4/105.4 cu in	20"	White	Remote	Electric	Power Tilt
90	J90GLSDE	2006	60° V-4/105.4 cu in	20"	Smoke	Remote	Electric	Power Tilt
90	J90PXSDR	2006	60° V-4/105.4 cu in	25"	White	Remote	Electric	Power Tilt
90	J90PL4SOR	2005	4 Cyl. / 119.0 cu in	20"	White	Remote	Electric	Power Tilt
90	BJ90PL4SOR	2005	4 Cyl. / 119.0 cu in	20"	White	Remote	Electric	Power Tilt
90	J90PX4SOR	2005	4 Cyl. / 119.0 cu in	25"	White	Remote	Electric	Power Tilt
90	BJ90PX4SOR	2005	4 Cyl. / 119.0 cu in	25"	White	Remote	Electric	Power Tilt
90	E90DPLSOR	2005	3 Cyl. / 79.0 cu in	20"	Blue	Remote	Electric	Power Tilt
90	E90DPXSOR	2005	3 Cyl. / 79.0 cu in	25"	White	Remote	Electric	Power Tilt
90	E90DSL SOC	2005	3 Cyl. / 79.0 cu in	20"	White	Remote	Electric	Power Tilt
90	E90WDPLSOS	2005	3 Cyl. / 79.0 cu in	20"	Blue	Remote	Electric	Power Tilt
90	E90WDELSOS	2005	3 Cyl. / 79.0 cu in	20"	Blue	Remote	Electric	Manual Tilt
90	E90WDRLSOS	2005	3 Cyl. / 79.0 cu in	20"	Blue	Tiller	Rope	Manual Tilt
90	E90WDRXSOS	2005	3 Cyl. / 79.0 cu in	25"	Blue	Tiller	Rope	Manual Tilt
90	J90PLSOA	2005	60° V-4/105.4 cu in	20"	White	Remote	Electric	Power Tilt
90	J90GLSOB	2005	60° V-4/105.4 cu in	20"	Smoke	Remote	Electric	Power Tilt

## Evinrude and Johnson Outboards 2005 - 2012

Horsepower	Model Number	Model Year	Engine	Shaft Length	Color	Steering	Starting	Midsection
90	J90PXSOC	2005	60° V-4/105.4 cu in	25"	White	Remote	Electric	Power Tilt
115	E115DPLINE	2012	60° V-4/105.4 cu in	20"	Blue	Remote	Electric	Power Tilt
115	E115DPXINE	2012	60° V-4/105.4 cu in	25"	White	Remote	Electric	Power Tilt
115	E115DCXINM	2012	60° V-4/105.4 cu in	25"	White	Remote	Electric	Power Tilt
115	E115DBXINE	2012	60° V-4/105.4 cu in	25"	Blue	Remote	Electric	Power Tilt
115	E115DSLIME	2012	60° V-4/105.4 cu in	20"	White	Remote	Electric	Power Tilt
115	E115DHLINA	2012	60° V-4/105.4 cu in	20"	Blue	Remote	Electric	Power Tilt
115	E115DHXINA	2012	60° V-4/105.4 cu in	25"	White	Remote	Electric	Power Tilt
115	E115HSLINA	2012	60° V-4/105.4 cu in	20"	White	Remote	Electric	Power Tilt
115	E115DPLIIB	2011	60° V-4/105.4 cu in	20"	Blue	Remote	Electric	Power Tilt
115	E115DPXIIB	2011	60° V-4/105.4 cu in	25"	White	Remote	Electric	Power Tilt
115	E115DCXIIA	2011	60° V-4/105.4 cu in	25"	White	Remote	Electric	Power Tilt
115	E115DBXIIB	2011	60° V-4/105.4 cu in	25"	Blue	Remote	Electric	Power Tilt
115	E115DSLIIIB	2011	60° V-4/105.4 cu in	20"	White	Remote	Electric	Power Tilt
115	E115DHLIIR	2011	60° V-4/105.4 cu in	20"	Blue	Remote	Electric	Power Tilt
115	E115DHXIIR	2011	60° V-4/105.4 cu in	25"	White	Remote	Electric	Power Tilt
115	E115HSLIIR	2011	60° V-4/105.4 cu in	20"	White	Remote	Electric	Power Tilt
115	E115DPLISM	2010	60° V-4/105.4 cu in	20"	Blue	Remote	Electric	Power Tilt
115	E115DPLISF	2010	60° V-4/105.4 cu in	20"	Blue	Remote	Electric	Power Tilt
115	E115DPXISM	2010	60° V-4/105.4 cu in	25"	White	Remote	Electric	Power Tilt
115	E115DPXISF	2010	60° V-4/105.4 cu in	25"	White	Remote	Electric	Power Tilt
115	E115DCXISR	2010	60° V-4/105.4 cu in	25"	White	Remote	Electric	Power Tilt
115	E115DCXISF	2010	60° V-4/105.4 cu in	25"	White	Remote	Electric	Power Tilt
115	E115DBXISM	2010	60° V-4/105.4 cu in	25"	Blue	Remote	Electric	Power Tilt
115	E115DBXISF	2010	60° V-4/105.4 cu in	25"	Blue	Remote	Electric	Power Tilt
115	E115DSLISM	2010	60° V-4/105.4 cu in	20"	White	Remote	Electric	Power Tilt
115	E115DSLISF	2010	60° V-4/105.4 cu in	20"	White	Remote	Electric	Power Tilt
115	E115DHLISC	2010	60° V-4/105.4 cu in	20"	Blue	Remote	Electric	Power Tilt
115	E115DHLISF	2010	60° V-4/105.4 cu in	20"	Blue	Remote	Electric	Power Tilt
115	E115DHXISC	2010	60° V-4/105.4 cu in	25"	White	Remote	Electric	Power Tilt
115	E115DHXISF	2010	60° V-4/105.4 cu in	25"	White	Remote	Electric	Power Tilt
115	E115HSLISC	2010	60° V-4/105.4 cu in	20"	White	Remote	Electric	Power Tilt
115	E115HSLISF	2010	60° V-4/105.4 cu in	20"	White	Remote	Electric	Power Tilt
115	E115DPLSEF	2009	60° V-4/105.4 cu in	20"	Blue	Remote	Electric	Power Tilt
115	E115DPLSEA	2009	60° V-4/105.4 cu in	20"	Blue	Remote	Electric	Power Tilt
115	E115DPXSEF	2009	60° V-4/105.4 cu in	25"	White	Remote	Electric	Power Tilt
115	E115DPXSEA	2009	60° V-4/105.4 cu in	25"	White	Remote	Electric	Power Tilt
115	E115DCXSEF	2009	60° V-4/105.4 cu in	25"	White	Remote	Electric	Power Tilt
115	E115DCXSEC	2009	60° V-4/105.4 cu in	25"	White	Remote	Electric	Power Tilt
115	E115DBXSEF	2009	60° V-4/105.4 cu in	25"	Blue	Remote	Electric	Power Tilt
115	E115DBXSEA	2009	60° V-4/105.4 cu in	25"	Blue	Remote	Electric	Power Tilt
115	E115DSLSEF	2009	60° V-4/105.4 cu in	20"	White	Remote	Electric	Power Tilt
115	E115DSLSEA	2009	60° V-4/105.4 cu in	20"	White	Remote	Electric	Power Tilt
115	E115DHLSES	2009	60° V-4/105.4 cu in	20"	Blue	Remote	Electric	Power Tilt
115	E115DHXSES	2009	60° V-4/105.4 cu in	20"	White	Remote	Electric	Power Tilt
115	E115HLSSES	2009	60° V-4/105.4 cu in	20"	White	Remote	Electric	Power Tilt
115	E115DPLSCR	2008	60° V-4/105.4 cu in	20"	Blue	Remote	Electric	Power Tilt
115	E115DPXSCR	2008	60° V-4/105.4 cu in	25"	White	Remote	Electric	Power Tilt
115	E115DCXSCS	2008	60° V-4/105.4 cu in	25"	White	Remote	Electric	Power Tilt
115	E115DBXSCR	2008	60° V-4/105.4 cu in	25"	Blue	Remote	Electric	Power Tilt
115	E115DSLSCR	2008	60° V-4/105.4 cu in	20"	White	Remote	Electric	Power Tilt
115	E115DPLSUC	2007	60° V-4/105.4 cu in	20"	Blue	Remote	Electric	Power Tilt
115	E115DPXSUC	2007	60° V-4/105.4 cu in	25"	White	Remote	Electric	Power Tilt
115	E115DBXSUC	2007	60° V-4/105.4 cu in	25"	Blue	Remote	Electric	Power Tilt
115	E115DSLSEC	2007	60° V-4/105.4 cu in	20"	White	Remote	Electric	Power Tilt
115	J115PL4SDA	2006	4 Cyl. / 119.0 cu in	20"	White	Remote	Electric	Power Tilt
115	J115PL4SDG	2006	4 Cyl. / 119.0 cu in	20"	White	Remote	Electric	Power Tilt
115	BJ115L4SDA	2006	4 Cyl. / 119.0 cu in	20"	White	Remote	Electric	Power Tilt
115	BJ115L4SDG	2006	4 Cyl. / 119.0 cu in	20"	White	Remote	Electric	Power Tilt
115	J115PX4SDA	2006	4 Cyl. / 119.0 cu in	25"	White	Remote	Electric	Power Tilt
115	J115PX4SDG	2006	4 Cyl. / 119.0 cu in	25"	White	Remote	Electric	Power Tilt
115	BJ115X4SDA	2006	4 Cyl. / 119.0 cu in	25"	White	Remote	Electric	Power Tilt
115	BJ115X4SDG	2006	4 Cyl. / 119.0 cu in	25"	White	Remote	Electric	Power Tilt
115	J115PLSDA	2006	60° V-4/105.4 cu in	20"	White	Remote	Electric	Power Tilt
115	J115PXSDA	2006	60° V-4/105.4 cu in	25"	White	Remote	Electric	Power Tilt
115	J115GLSDE	2006	60° V-4/105.4 cu in	20"	Smoke	Remote	Electric	Power Tilt
115	E115FPLSDS	2006	60° V-4/105.4 cu in	20"	Blue	Remote	Electric	Power Tilt
115	E115FPXSDS	2006	60° V-4/105.4 cu in	25"	White	Remote	Electric	Power Tilt
115	E115FSLSDS	2006	60° V-4/105.4 cu in	20"	White	Remote	Electric	Power Tilt
115	J115PL4SOR	2005	4 Cyl. / 119.0 cu in	20"	White	Remote	Electric	Power Tilt



## Evinrude and Johnson Outboards 2005 - 2012

Horsepower	Model Number	Model Year	Engine	Shaft Length	Color	Steering	Starting	Midsection
115	BJ115L4SOR	2005	4 Cyl. / 119.0 cu in	20"	White	Remote	Electric	Power Tilt
115	J115PX4SOR	2005	4 Cyl. / 119.0 cu in	25"	White	Remote	Electric	Power Tilt
115	BJ115X4SOR	2005	4 Cyl. / 119.0 cu in	25"	White	Remote	Electric	Power Tilt
115	J115PLSOR	2005	60° V-4/105.4 cu in	20"	White	Remote	Electric	Power Tilt
115	J115PXSOR	2005	60° V-4/105.4 cu in	25"	White	Remote	Electric	Power Tilt
115	J115GLSOB	2005	60° V-4/105.4 cu in	20"	Smoke	Remote	Electric	Power Tilt
115	J115WPLSOC	2005	60° V-4/105.4 cu in	20"	Smoke	Remote	Electric	Power Tilt
130	E130DPLINA	2012	60° V-4/105.4 cu in	20"	Blue	Remote	Electric	Power Tilt
130	E130DPXINA	2012	60° V-4/105.4 cu in	25"	White	Remote	Electric	Power Tilt
130	E130DCXINA	2012	60° V-4/105.4 cu in	25"	White	Remote	Electric	Power Tilt
130	E130DSLINA	2012	60° V-4/105.4 cu in	20"	White	Remote	Electric	Power Tilt
130	E130DPLIIR	2011	60° V-4/105.4 cu in	20"	Blue	Remote	Electric	Power Tilt
130	E130DPXIIR	2011	60° V-4/105.4 cu in	25"	White	Remote	Electric	Power Tilt
130	E130DCXIIR	2011	60° V-4/105.4 cu in	25"	White	Remote	Electric	Power Tilt
130	E130DSLIIIR	2011	60° V-4/105.4 cu in	20"	White	Remote	Electric	Power Tilt
130	E130DPLISC	2010	60° V-4/105.4 cu in	20"	Blue	Remote	Electric	Power Tilt
130	E130DPLISF	2010	60° V-4/105.4 cu in	20"	Blue	Remote	Electric	Power Tilt
130	E130DPXISC	2010	60° V-4/105.4 cu in	25"	White	Remote	Electric	Power Tilt
130	E130DPXISF	2010	60° V-4/105.4 cu in	25"	White	Remote	Electric	Power Tilt
130	E130DCXISC	2010	60° V-4/105.4 cu in	25"	White	Remote	Electric	Power Tilt
130	E130DCXISF	2010	60° V-4/105.4 cu in	25"	White	Remote	Electric	Power Tilt
130	E130DSLISC	2010	60° V-4/105.4 cu in	20"	White	Remote	Electric	Power Tilt
130	E130DSLISF	2010	60° V-4/105.4 cu in	20"	White	Remote	Electric	Power Tilt
130	E130DPLSES	2009	60° V-4/105.4 cu in	20"	Blue	Remote	Electric	Power Tilt
130	E130DPXSES	2009	60° V-4/105.4 cu in	25"	White	Remote	Electric	Power Tilt
130	E130DCXSES	2009	60° V-4/105.4 cu in	25"	White	Remote	Electric	Power Tilt
130	E130DSLSES	2009	60° V-4/105.4 cu in	20"	White	Remote	Electric	Power Tilt
135	E135FPLSOB	2005	60° V-6/158.1 cu in	20"	Blue	Remote	Electric	Power Tilt
135	E135FPXSOB	2005	60° V-6/158.1 cu in	25"	White	Remote	Electric	Power Tilt
135	E135FCXSOB	2005	60° V-6/158.1 cu in	25"	White	Remote	Electric	Power Tilt
135	E135FSLSOB	2005	60° V-6/158.1 cu in	20"	White	Remote	Electric	Power Tilt
135	E135FPLSDE	2006	60° V-6/158.1 cu in	20"	Blue	Remote	Electric	Power Tilt
135	E135FPXSDE	2006	60° V-6/158.1 cu in	25"	White	Remote	Electric	Power Tilt
135	E135FCXSDE	2006	60° V-6/158.1 cu in	25"	White	Remote	Electric	Power Tilt
135	E135FSLSDE	2006	60° V-6/158.1 cu in	20"	White	Remote	Electric	Power Tilt
140	J140PL4SOR	2005	4 Cyl. / 124.6 cu in	20"	White	Remote	Electric	Power Tilt
140	BJ140L4SOC	2005	4 Cyl. / 124.6 cu in	20"	White	Remote	Electric	Power Tilt
140	J140PX4SOR	2005	4 Cyl. / 124.6 cu in	25"	White	Remote	Electric	Power Tilt
140	BJ140X4SOC	2005	4 Cyl. / 124.6 cu in	25"	White	Remote	Electric	Power Tilt
140	J140CX4SOR	2005	4 Cyl. / 124.6 cu in	25"	White	Remote	Electric	Power Tilt
140	BJ140CX4OC	2005	4 Cyl. / 124.6 cu in	25"	White	Remote	Electric	Power Tilt
140	J140PL4SDA	2006	4 Cyl. / 124.6 cu in	20"	White	Remote	Electric	Power Tilt
140	J140PL4SDG	2006	4 Cyl. / 124.6 cu in	20"	White	Remote	Electric	Power Tilt
140	BJ140L4SDR	2006	4 Cyl. / 124.6 cu in	20"	White	Remote	Electric	Power Tilt
140	BJ140L4SDG	2006	4 Cyl. / 124.6 cu in	20"	White	Remote	Electric	Power Tilt
140	J140PX4SDA	2006	4 Cyl. / 124.6 cu in	25"	White	Remote	Electric	Power Tilt
140	J140PX4SDG	2006	4 Cyl. / 124.6 cu in	25"	White	Remote	Electric	Power Tilt
140	BJ140X4SDR	2006	4 Cyl. / 124.6 cu in	25"	White	Remote	Electric	Power Tilt
140	BJ140X4SDG	2006	4 Cyl. / 124.6 cu in	25"	White	Remote	Electric	Power Tilt
140	J140CX4SDA	2006	4 Cyl. / 124.6 cu in	25"	White	Remote	Electric	Power Tilt
140	J140CX4SDG	2006	4 Cyl. / 124.6 cu in	25"	White	Remote	Electric	Power Tilt
140	BJ140CX4DR	2006	4 Cyl. / 124.6 cu in	25"	White	Remote	Electric	Power Tilt
140	BJ140CX4DG	2006	4 Cyl. / 124.6 cu in	25"	White	Remote	Electric	Power Tilt
150	E150DPLINE	2012	60° V-6/158.2 cu in	20"	Blue	Remote	Electric	Power Tilt
150	E150DPXINE	2012	60° V-6/158.2 cu in	25"	White	Remote	Electric	Power Tilt
150	E150DBXINE	2012	60° V-6/158.2 cu in	25"	Blue	Remote	Electric	Power Tilt
150	E150DHLINE	2012	60° V-6/158.2 cu in	20"	Blue	Remote	Electric	Power Tilt
150	E150HSLINM	2012	60° V-6/158.2 cu in	20"	White	Remote	Electric	Power Tilt
150	E150DCXINE	2012	60° V-6/158.2 cu in	25"	White	Remote	Electric	Power Tilt
150	E150DPLIIB	2011	60° V-6/158.2 cu in	20"	Blue	Remote	Electric	Power Tilt
150	E150DPXIIB	2011	60° V-6/158.2 cu in	25"	White	Remote	Electric	Power Tilt
150	E150DBXIIB	2011	60° V-6/158.2 cu in	25"	Blue	Remote	Electric	Power Tilt
150	E150DSLIIIB	2011	60° V-6/158.2 cu in	20"	White	Remote	Electric	Power Tilt
150	E150DHLIIB	2011	60° V-6/158.2 cu in	20"	Blue	Remote	Electric	Power Tilt
150	E150HSLIIB	2011	60° V-6/158.2 cu in	20"	White	Remote	Electric	Power Tilt
150	E150DCXIIB	2011	60° V-6/158.2 cu in	25"	White	Remote	Electric	Power Tilt
150	E150DPLISM	2010	60° V-6/158.2 cu in	20"	Blue	Remote	Electric	Power Tilt
150	E150DPLISF	2010	60° V-6/158.2 cu in	20"	Blue	Remote	Electric	Power Tilt
150	E150DPXISM	2010	60° V-6/158.2 cu in	25"	White	Remote	Electric	Power Tilt
150	E150DSLISM	2012	60° V-6/158.2 cu in	20"	White	Remote	Electric	Power Tilt

## Evinrude and Johnson Outboards 2005 - 2012

Horsepower	Model Number	Model Year	Engine	Shaft Length	Color	Steering	Starting	Midsection
150	E150DPXISF	2010	60° V-6/158.2 cu in	25"	White	Remote	Electric	Power Tilt
150	E150DBXISM	2010	60° V-6/158.2 cu in	25"	Blue	Remote	Electric	Power Tilt
150	E150DBXISF	2010	60° V-6/158.2 cu in	25"	Blue	Remote	Electric	Power Tilt
150	E150DSLISM	2010	60° V-6/158.2 cu in	20"	White	Remote	Electric	Power Tilt
150	E150DSLISF	2010	60° V-6/158.2 cu in	20"	White	Remote	Electric	Power Tilt
150	E150DHLISM	2010	60° V-6/158.2 cu in	20"	Blue	Remote	Electric	Power Tilt
150	E150DHLISF	2010	60° V-6/158.2 cu in	20"	Blue	Remote	Electric	Power Tilt
150	E150HSLISR	2010	60° V-6/158.2 cu in	20"	White	Remote	Electric	Power Tilt
150	E150HSLISF	2010	60° V-6/158.2 cu in	20"	White	Remote	Electric	Power Tilt
150	E150DCXISM	2010	60° V-6/158.2 cu in	25"	White	Remote	Electric	Power Tilt
150	E150DCXISF	2010	60° V-6/158.2 cu in	25"	White	Remote	Electric	Power Tilt
150	E150DPLSEA	2009	60° V-6/158.2 cu in	20"	Blue	Remote	Electric	Power Tilt
150	E150DPXSEA	2009	60° V-6/158.2 cu in	25"	White	Remote	Electric	Power Tilt
150	E150HGXSSES	2009	60° V-6/158.2 cu in	25"	Smoke	Remote	Electric	Power Tilt
150	E150DBXSEA	2009	60° V-6/158.2 cu in	25"	Blue	Remote	Electric	Power Tilt
150	E150DSLSEA	2009	60° V-6/158.2 cu in	20"	White	Remote	Electric	Power Tilt
150	E150DHLSEA	2009	60° V-6/158.2 cu in	20"	Blue	Remote	Electric	Power Tilt
150	E150HGLSES	2009	60° V-6/158.2 cu in	20"	Smoke	Remote	Electric	Power Tilt
150	E150HSLSEC	2009	60° V-6/158.2 cu in	20"	White	Remote	Electric	Power Tilt
150	E150DCXSEA	2009	60° V-6/158.2 cu in	25"	White	Remote	Electric	Power Tilt
150	E150DPLSCR	2008	60° V-6/158.2 cu in	20"	Blue	Remote	Electric	Power Tilt
150	E150DPXSCR	2008	60° V-6/158.2 cu in	25"	White	Remote	Electric	Power Tilt
150	E150DPXSCF	2008	60° V-6/158.2 cu in	25"	White	Remote	Electric	Power Tilt
150	E150DBXSCR	2008	60° V-6/158.2 cu in	25"	Blue	Remote	Electric	Power Tilt
150	E150DBXSCF	2008	60° V-6/158.2 cu in	25"	Blue	Remote	Electric	Power Tilt
150	E150DSLSCR	2008	60° V-6/158.2 cu in	20"	White	Remote	Electric	Power Tilt
150	E150DHLSCR	2008	60° V-6/158.2 cu in	20"	Blue	Remote	Electric	Power Tilt
150	E150DHLSCF	2008	60° V-6/158.2 cu in	20"	Blue	Remote	Electric	Power Tilt
150	E150HSLSCS	2008	60° V-6/158.2 cu in	20"	White	Remote	Electric	Power Tilt
150	E150HSLSCF	2008	60° V-6/158.2 cu in	20"	White	Remote	Electric	Power Tilt
150	E150DCXSCR	2008	60° V-6/158.2 cu in	25"	White	Remote	Electric	Power Tilt
150	E150DCXSCF	2008	60° V-6/158.2 cu in	25"	White	Remote	Electric	Power Tilt
150	E150DPLSUC	2007	60° V-6/158.2 cu in	20"	Blue	Remote	Electric	Power Tilt
150	E150DPLSUF	2007	60° V-6/158.2 cu in	20"	Blue	Remote	Electric	Power Tilt
150	E150DPXSUC	2007	60° V-6/158.2 cu in	25"	White	Remote	Electric	Power Tilt
150	E150DPXSUF	2007	60° V-6/158.2 cu in	25"	White	Remote	Electric	Power Tilt
150	E150DBXSUF	2007	60° V-6/158.2 cu in	25"	Blue	Remote	Electric	Power Tilt
150	E150DSLXUC	2007	60° V-6/158.2 cu in	20"	White	Remote	Electric	Power Tilt
150	E150DSLXUF	2007	60° V-6/158.2 cu in	20"	White	Remote	Electric	Power Tilt
150	E150DHLXUC	2007	60° V-6/158.2 cu in	20"	Blue	Remote	Electric	Power Tilt
150	E150DHLXUF	2007	60° V-6/158.2 cu in	20"	Blue	Remote	Electric	Power Tilt
150	E150DCXSUC	2007	60° V-6/158.2 cu in	25"	White	Remote	Electric	Power Tilt
150	E150DCXSUF	2007	60° V-6/158.2 cu in	25"	White	Remote	Electric	Power Tilt
150	E150FPLSDR	2006	60° V-6/158.1 cu in	20"	Blue	Remote	Electric	Power Tilt
150	E150FPXSDR	2006	60° V-6/158.1 cu in	25"	White	Remote	Electric	Power Tilt
150	E150FCXSDR	2006	60° V-6/158.1 cu in	25"	White	Remote	Electric	Power Tilt
150	E150FSLSDR	2006	60° V-6/158.1 cu in	20"	White	Remote	Electric	Power Tilt
150	E150FHLSDR	2006	60° V-6/158.1 cu in	20"	Blue	Remote	Electric	Power Tilt
150	J150PLSDD	2006	60° V-6/158.1 cu in	20"	White	Remote	Electric	Power Tilt
150	J150PXSD	2006	60° V-6/158.1 cu in	25"	White	Remote	Electric	Power Tilt
150	J150CXSD	2006	60° V-6/158.1 cu in	25"	White	Remote	Electric	Power Tilt
150	J150GLSDE	2006	60° V-6/158.1 cu in	20"	Smoke	Remote	Electric	Power Tilt
150	J150PLSOE	2005	60° V-6/158.1 cu in	20"	White	Remote	Electric	Power Tilt
150	J150PXSOE	2005	60° V-6/158.1 cu in	25"	White	Remote	Electric	Power Tilt
150	J150CXSOB	2005	60° V-6/158.1 cu in	25"	White	Remote	Electric	Power Tilt
150	J150GLSOB	2005	60° V-6/158.1 cu in	20"	Smoke	Remote	Electric	Power Tilt
150	J150MLSOR	2005	60° V-6/158.1 cu in	20"	Green	Remote	Electric	Power Tilt
150	J150MXSOR	2005	60° V-6/158.1 cu in	25"	Green	Remote	Electric	Power Tilt
150	E150FPLSOC	2005	60° V-6/158.1 cu in	20"	Blue	Remote	Electric	Power Tilt
150	E150FPXSOC	2005	60° V-6/158.1 cu in	25"	White	Remote	Electric	Power Tilt
150	E150FCXSOC	2005	60° V-6/158.1 cu in	25"	White	Remote	Electric	Power Tilt
150	E150FSLSOC	2005	60° V-6/158.1 cu in	20"	White	Remote	Electric	Power Tilt
150	E150FHLSOC	2005	60° V-6/158.1 cu in	20"	Blue	Remote	Electric	Power Tilt
175	E175DPLINE	2012	60° V-6/158.2 cu in	20"	Blue	Remote	Electric	Power Tilt
175	E175DPXINE	2012	60° V-6/158.2 cu in	25"	White	Remote	Electric	Power Tilt
175	E175DMXINM	2012	60° V-6/158.2 cu in	25"	Green	Remote	Electric	Power Tilt
175	E175DSLIN	2012	60° V-6/158.2 cu in	20"	White	Remote	Electric	Power Tilt
175	E175DCXINE	2012	60° V-6/158.2 cu in	25"	White	Remote	Electric	Power Tilt
175	E175DPLIIB	2011	60° V-6/158.2 cu in	20"	Blue	Remote	Electric	Power Tilt
175	E175DPXIIB	2011	60° V-6/158.2 cu in	25"	White	Remote	Electric	Power Tilt



## Evinrude and Johnson Outboards 2005 - 2012

Horsepower	Model Number	Model Year	Engine	Shaft Length	Color	Steering	Starting	Midsection
175	E175DMXIIA	2011	60° V-6/158.2 cu in	25"	Green	Remote	Electric	Power Tilt
175	E175DSLIIIB	2011	60° V-6/158.2 cu in	20"	White	Remote	Electric	Power Tilt
175	E175DCXIIB	2011	60° V-6/158.2 cu in	25"	White	Remote	Electric	Power Tilt
175	E175DPLISM	2010	60° V-6/158.2 cu in	20"	Blue	Remote	Electric	Power Tilt
175	E175DPLISF	2010	60° V-6/158.2 cu in	20"	Blue	Remote	Electric	Power Tilt
175	E175DPXISM	2010	60° V-6/158.2 cu in	25"	White	Remote	Electric	Power Tilt
175	E175DPXISF	2010	60° V-6/158.2 cu in	25"	White	Remote	Electric	Power Tilt
175	E175DMXISR	2010	60° V-6/158.2 cu in	25"	Green	Remote	Electric	Power Tilt
175	E175DMXISF	2010	60° V-6/158.2 cu in	25"	Green	Remote	Electric	Power Tilt
175	E175DSLISM	2010	60° V-6/158.2 cu in	20"	White	Remote	Electric	Power Tilt
175	E175DSLISF	2010	60° V-6/158.2 cu in	20"	White	Remote	Electric	Power Tilt
175	E175DCXISM	2010	60° V-6/158.2 cu in	25"	White	Remote	Electric	Power Tilt
175	E175DCXISF	2010	60° V-6/158.2 cu in	25"	White	Remote	Electric	Power Tilt
175	E175DPLSEA	2009	60° V-6/158.2 cu in	20"	Blue	Remote	Electric	Power Tilt
175	E175DPXSEA	2009	60° V-6/158.2 cu in	25"	White	Remote	Electric	Power Tilt
175	E175DMXSEC	2009	60° V-6/158.2 cu in	25"	Green	Remote	Electric	Power Tilt
175	E175DSLSEA	2009	60° V-6/158.2 cu in	20"	White	Remote	Electric	Power Tilt
175	E175DCXSEA	2009	60° V-6/158.2 cu in	25"	White	Remote	Electric	Power Tilt
175	E175DPLSCR	2008	60° V-6/158.2 cu in	20"	Blue	Remote	Electric	Power Tilt
175	E175DPXSCR	2008	60° V-6/158.2 cu in	25"	White	Remote	Electric	Power Tilt
175	E175DPXSCF	2008	60° V-6/158.2 cu in	25"	White	Remote	Electric	Power Tilt
175	E175DMXSCS	2008	60° V-6/158.2 cu in	25"	Green	Remote	Electric	Power Tilt
175	E175DMXSCF	2008	60° V-6/158.2 cu in	25"	Green	Remote	Electric	Power Tilt
175	E175DSLSCR	2008	60° V-6/158.2 cu in	20"	White	Remote	Electric	Power Tilt
175	E175DCXSCR	2008	60° V-6/158.2 cu in	25"	White	Remote	Electric	Power Tilt
175	E175DCXSCF	2008	60° V-6/158.2 cu in	25"	White	Remote	Electric	Power Tilt
175	E175DPLSUF	2007	60° V-6/158.2 cu in	20"	Blue	Remote	Electric	Power Tilt
175	E175DPXSUF	2007	60° V-6/158.2 cu in	25"	White	Remote	Electric	Power Tilt
175	E175DSLXUF	2007	60° V-6/158.2 cu in	20"	White	Remote	Electric	Power Tilt
175	E175DCXSUF	2007	60° V-6/158.2 cu in	25"	White	Remote	Electric	Power Tilt
175	J175PLSDD	2006	60° V-6/158.1 cu in	20"	White	Remote	Electric	Power Tilt
175	J175PXSD	2006	60° V-6/158.1 cu in	25"	White	Remote	Electric	Power Tilt
175	J175CXSD	2006	60° V-6/158.1 cu in	25"	White	Remote	Electric	Power Tilt
175	J175GLSDE	2006	60° V-6/158.1 cu in	20"	Smoke	Remote	Electric	Power Tilt
175	E175FPLSDS	2006	60° V-6/158.1 cu in	20"	Blue	Remote	Electric	Power Tilt
175	E175FPXSDS	2006	60° V-6/158.1 cu in	25"	White	Remote	Electric	Power Tilt
175	E175FCXSDS	2006	60° V-6/158.1 cu in	25"	White	Remote	Electric	Power Tilt
175	E175FSLSD	2006	60° V-6/158.1 cu in	20"	White	Remote	Electric	Power Tilt
175	J175PLSOE	2005	60° V-6/158.1 cu in	20"	White	Remote	Electric	Power Tilt
175	J175PXSOE	2005	60° V-6/158.1 cu in	25"	White	Remote	Electric	Power Tilt
175	J175CXSOB	2005	60° V-6/158.1 cu in	25"	White	Remote	Electric	Power Tilt
175	J175GLSOB	2005	60° V-6/158.1 cu in	20"	Smoke	Remote	Electric	Power Tilt
175	J175MXSOR	2005	60° V-6/158.1 cu in	25"	Green	Remote	Electric	Power Tilt
175	E175FPLSOD	2005	60° V-6/158.1 cu in	20"	Blue	Remote	Electric	Power Tilt
175	E175FPXSOD	2005	60° V-6/158.1 cu in	25"	White	Remote	Electric	Power Tilt
175	E175MFXSOS	2005	60° V-6/158.1 cu in	25"	Green	Remote	Electric	Power Tilt
175	E175FCXSOD	2005	60° V-6/158.1 cu in	25"	White	Remote	Electric	Power Tilt
175	E175FSLSOE	2005	60° V-6/158.1 cu in	20"	White	Remote	Electric	Power Tilt
200	E200DPLIND	2012	60° V-6/158.2 cu in	20"	Blue	Remote	Electric	Power Tilt
200	E200DPXIND	2012	60° V-6/158.2 cu in	25"	White	Remote	Electric	Power Tilt
200	E200DSLIND	2012	60° V-6/158.2 cu in	20"	White	Remote	Electric	Power Tilt
200	E200DCXIND	2012	60° V-6/158.2 cu in	25"	White	Remote	Electric	Power Tilt
200	E200HSLINE	2012	90° V-6/200.1 cu in	20"	White	Remote	Electric	Power Tilt
200	E200HVLINM	2012	90° V-6/200.1 cu in	20"	White	Remote	Electric	Power Tilt
200	E200DHLINS	2012	90° V-6/200.1 cu in	20"	Blue	Remote	Electric	Power Tilt
200	E200DHXINE	2012	90° V-6/200.1 cu in	25"	White	Remote	Electric	Power Tilt
200	E200HCXINE	2012	90° V-6/200.1 cu in	25"	White	Remote	Electric	Power Tilt
200	E200DPLIIE	2011	60° V-6/158.2 cu in	20"	Blue	Remote	Electric	Power Tilt
200	E200DPXIIE	2011	60° V-6/158.2 cu in	25"	White	Remote	Electric	Power Tilt
200	E200DSLIIIE	2011	60° V-6/158.2 cu in	20"	White	Remote	Electric	Power Tilt
200	E200DCXIIE	2011	60° V-6/158.2 cu in	25"	White	Remote	Electric	Power Tilt
200	E200HSLIIB	2011	90° V-6/200.1 cu in	20"	White	Remote	Electric	Power Tilt
200	E200HVLIIA	2011	90° V-6/200.1 cu in	20"	White	Remote	Electric	Power Tilt
200	E200DHLIID	2011	90° V-6/200.1 cu in	20"	Blue	Remote	Electric	Power Tilt
200	E200DHXIIB	2011	90° V-6/200.1 cu in	25"	White	Remote	Electric	Power Tilt
200	E200HCXIIB	2011	90° V-6/200.1 cu in	25"	White	Remote	Electric	Power Tilt
200	E200DPLISB	2010	60° V-6/158.2 cu in	20"	Blue	Remote	Electric	Power Tilt
200	E200DPLISF	2010	60° V-6/158.2 cu in	20"	Blue	Remote	Electric	Power Tilt
200	E200DPXISB	2010	60° V-6/158.2 cu in	25"	White	Remote	Electric	Power Tilt
200	E200DPXISF	2010	60° V-6/158.2 cu in	25"	White	Remote	Electric	Power Tilt

## Evinrude and Johnson Outboards 2005 - 2012

Horsepower	Model Number	Model Year	Engine	Shaft Length	Color	Steering	Starting	Midsection
200	E200DSLISB	2010	60° V-6/158.2 cu in	20"	White	Remote	Electric	Power Tilt
200	E200DSLISF	2010	60° V-6/158.2 cu in	20"	White	Remote	Electric	Power Tilt
200	E200DCXISB	2010	60° V-6/158.2 cu in	25"	White	Remote	Electric	Power Tilt
200	E200DCXISF	2010	60° V-6/158.2 cu in	25"	White	Remote	Electric	Power Tilt
200	E200HSLISM	2010	90° V-6/200.1 cu in	20"	White	Remote	Electric	Power Tilt
200	E200HSLISF	2010	90° V-6/200.1 cu in	20"	White	Remote	Electric	Power Tilt
200	E200HVLISR	2010	90° V-6/200.1 cu in	20"	White	Remote	Electric	Power Tilt
200	E200HVLISF	2010	90° V-6/200.1 cu in	20"	White	Remote	Electric	Power Tilt
200	E200DHLISE	2010	90° V-6/200.1 cu in	20"	Blue	Remote	Electric	Power Tilt
200	E200DHLISF	2010	90° V-6/200.1 cu in	20"	Blue	Remote	Electric	Power Tilt
200	E200DHXISM	2010	90° V-6/200.1 cu in	25"	White	Remote	Electric	Power Tilt
200	E200DHXISF	2010	90° V-6/200.1 cu in	25"	White	Remote	Electric	Power Tilt
200	E200HCXISM	2010	90° V-6/200.1 cu in	25"	White	Remote	Electric	Power Tilt
200	E200HCXISF	2010	90° V-6/200.1 cu in	25"	White	Remote	Electric	Power Tilt
200	E200DPLSEM	2009	60° V-6/158.2 cu in	20"	Blue	Remote	Electric	Power Tilt
200	E200DPXSEM	2009	60° V-6/158.2 cu in	25"	White	Remote	Electric	Power Tilt
200	E200DSLSEM	2009	60° V-6/158.2 cu in	20"	White	Remote	Electric	Power Tilt
200	E200DCXSEM	2009	60° V-6/158.2 cu in	25"	White	Remote	Electric	Power Tilt
200	E200HSLSEA	2009	90° V-6/200.1 cu in	20"	White	Remote	Electric	Power Tilt
200	E200HVLSEC	2009	90° V-6/200.1 cu in	20"	White	Remote	Electric	Power Tilt
200	E200DHLSEB	2009	90° V-6/200.1 cu in	20"	Blue	Remote	Electric	Power Tilt
200	E200DHXSEA	2009	90° V-6/200.1 cu in	25"	White	Remote	Electric	Power Tilt
200	E200HCXSEA	2009	90° V-6/200.1 cu in	25"	White	Remote	Electric	Power Tilt
200	E200DPLSCA	2008	60° V-6/158.2 cu in	20"	Blue	Remote	Electric	Power Tilt
200	E200DPXSCA	2008	60° V-6/158.2 cu in	25"	White	Remote	Electric	Power Tilt
200	E200DPXSCF	2008	60° V-6/158.2 cu in	25"	White	Remote	Electric	Power Tilt
200	E200DSLSCA	2008	60° V-6/158.2 cu in	20"	White	Remote	Electric	Power Tilt
200	E200DCXSCA	2008	60° V-6/158.2 cu in	25"	White	Remote	Electric	Power Tilt
200	E200DCXSCF	2008	60° V-6/158.2 cu in	25"	White	Remote	Electric	Power Tilt
200	E200HSLSCR	2008	90° V-6/200.1 cu in	20"	White	Remote	Electric	Power Tilt
200	E200HSLSCF	2008	90° V-6/200.1 cu in	20"	White	Remote	Electric	Power Tilt
200	E200HSLSCG	2008	90° V-6/200.1 cu in	20"	White	Remote	Electric	Power Tilt
200	E200HLSLCH	2008	90° V-6/200.1 cu in	20"	White	Remote	Electric	Power Tilt
200	E200HVLSCS	2008	90° V-6/200.1 cu in	20"	White	Remote	Electric	Power Tilt
200	E200HVLSCF	2008	90° V-6/200.1 cu in	20"	White	Remote	Electric	Power Tilt
200	E200HVLSCG	2008	90° V-6/200.1 cu in	20"	White	Remote	Electric	Power Tilt
200	E200HVLSCH	2008	90° V-6/200.1 cu in	20"	White	Remote	Electric	Power Tilt
200	E200DHLSCM	2008	90° V-6/200.1 cu in	20"	Blue	Remote	Electric	Power Tilt
200	E200DHLSCF	2008	90° V-6/200.1 cu in	20"	Blue	Remote	Electric	Power Tilt
200	E200DHLSCG	2008	90° V-6/200.1 cu in	20"	Blue	Remote	Electric	Power Tilt
200	E200DHLSCH	2008	90° V-6/200.1 cu in	20"	Blue	Remote	Electric	Power Tilt
200	E200DHXSCR	2008	90° V-6/200.1 cu in	25"	White	Remote	Electric	Power Tilt
200	E200DHXSCF	2008	90° V-6/200.1 cu in	25"	White	Remote	Electric	Power Tilt
200	E200DHXSCG	2008	90° V-6/200.1 cu in	25"	White	Remote	Electric	Power Tilt
200	E200DHXSCH	2008	90° V-6/200.1 cu in	25"	White	Remote	Electric	Power Tilt
200	E200HCXSCR	2008	90° V-6/200.1 cu in	25"	White	Remote	Electric	Power Tilt
200	E200HCXSCF	2008	90° V-6/200.1 cu in	25"	White	Remote	Electric	Power Tilt
200	E200HCXSCG	2008	90° V-6/200.1 cu in	25"	White	Remote	Electric	Power Tilt
200	E200HCXSCH	2008	90° V-6/200.1 cu in	25"	White	Remote	Electric	Power Tilt
200	E200DPLSUR	2007	60° V-6/158.2 cu in	20"	Blue	Remote	Electric	Power Tilt
200	E200DPLSUF	2007	60° V-6/158.2 cu in	20"	Blue	Remote	Electric	Power Tilt
200	E200DPXSUR	2007	60° V-6/158.2 cu in	25"	White	Remote	Electric	Power Tilt
200	E200DPXSUF	2007	60° V-6/158.2 cu in	25"	White	Remote	Electric	Power Tilt
200	E200DSL SUR	2007	60° V-6/158.2 cu in	20"	White	Remote	Electric	Power Tilt
200	E200DSL SUF	2007	60° V-6/158.2 cu in	20"	White	Remote	Electric	Power Tilt
200	E200DCXSUR	2007	60° V-6/158.2 cu in	25"	White	Remote	Electric	Power Tilt
200	E200DCXSUF	2007	60° V-6/158.2 cu in	25"	White	Remote	Electric	Power Tilt
200	E200HLSLUC	2007	90° V-6/200.1 cu in	20"	White	Remote	Electric	Power Tilt
200	E200DHL SUG	2007	90° V-6/200.1 cu in	20"	Blue	Remote	Electric	Power Tilt
200	E200DHL SUA	2007	90° V-6/200.1 cu in	20"	Blue	Remote	Electric	Power Tilt
200	E200DHX SUC	2007	90° V-6/200.1 cu in	25"	White	Remote	Electric	Power Tilt
200	E200HCX SUC	2007	90° V-6/200.1 cu in	25"	White	Remote	Electric	Power Tilt
200	E200HLS SDS	2006	90° V-6/200.1 cu in	20"	White	Remote	Electric	Power Tilt
200	E200DHL SDF	2006	90° V-6/200.1 cu in	20"	Blue	Remote	Electric	Power Tilt
200	E200DHX SDS	2006	90° V-6/200.1 cu in	25"	White	Remote	Electric	Power Tilt
200	E200HCX SDS	2006	90° V-6/200.1 cu in	25"	White	Remote	Electric	Power Tilt
200	E200MDX SDS	2006	90° V-6/200.1 cu in	25"	Black	Remote	Electric	Power Tilt
200	E200MCX SDS	2006	90° V-6/200.1 cu in	25"	Black	Remote	Electric	Power Tilt
200	J200PX4SDR	2006	6 Cyl. / 220.0 cu in	25"	White	Remote	Electric	Power Tilt
200	BJ200X4SDC	2006	6 Cyl. / 220.0 cu in	25"	White	Remote	Electric	Power Tilt

## Evinrude and Johnson Outboards 2005 - 2012

Horsepower	Model Number	Model Year	Engine	Shaft Length	Color	Steering	Starting	Midsection
200	J200CX4SDR	2006	6 Cyl. / 220.0 cu in	25"	White	Remote	Electric	Power Tilt
200	BJ200CX4DC	2006	6 Cyl. / 220.0 cu in	25"	White	Remote	Electric	Power Tilt
200	J200PX4SOC	2005	6 Cyl. / 220.0 cu in	25"	White	Remote	Electric	Power Tilt
200	BJ200X4SOS	2005	6 Cyl. / 220.0 cu in	25"	White	Remote	Electric	Power Tilt
200	J200CX4SOC	2005	6 Cyl. / 220.0 cu in	25"	White	Remote	Electric	Power Tilt
200	BJ200CX4OS	2005	6 Cyl. / 220.0 cu in	25"	White	Remote	Electric	Power Tilt
200	E200DPLSOC	2005	90° V-6/200.1 cu in	20"	Blue	Remote	Electric	Power Tilt
200	E200DPXSOC	2005	90° V-6/200.1 cu in	25"	White	Remote	Electric	Power Tilt
200	E200DCXSOC	2005	90° V-6/200.1 cu in	25"	White	Remote	Electric	Power Tilt
200	E200DLSOC	2005	90° V-6/200.1 cu in	20"	White	Remote	Electric	Power Tilt
200	E200DHLSOC	2005	90° V-6/200.1 cu in	20"	Blue	Remote	Electric	Power Tilt
200	E200DHL SOG	2005	90° V-6/200.1 cu in	20"	Blue	Remote	Electric	Power Tilt
225	E225DPLINS	2012	90° V-6/200.1 cu in	20"	Blue	Remote	Electric	Power Tilt
225	E225DPXINS	2012	90° V-6/200.1 cu in	25"	White	Remote	Electric	Power Tilt
225	E225DPZINS	2012	90° V-6/200.1 cu in	30"	White	Remote	Electric	Power Tilt
225	E225DCXINS	2012	90° V-6/200.1 cu in	25"	White	Remote	Electric	Power Tilt
225	E225DCZINS	2012	90° V-6/200.1 cu in	30"	White	Remote	Electric	Power Tilt
225	E225DHLINS	2012	90° V-6/200.1 cu in	20"	Blue	Remote	Electric	Power Tilt
225	E225HSLINM	2012	90° V-6/200.1 cu in	20"	White	Remote	Electric	Power Tilt
225	E225DHXIND	2012	90° V-6/200.1 cu in	25"	Blue	Remote	Electric	Power Tilt
250	E250DPLINS	2012	90° V-6/200.1 cu in	20"	Blue	Remote	Electric	Power Tilt
225	E225DPLIID	2011	90° V-6/200.1 cu in	20"	Blue	Remote	Electric	Power Tilt
225	E225DPXIID	2011	90° V-6/200.1 cu in	25"	White	Remote	Electric	Power Tilt
225	E225DPZIID	2011	90° V-6/200.1 cu in	30"	White	Remote	Electric	Power Tilt
225	E225DCXIID	2011	90° V-6/200.1 cu in	25"	White	Remote	Electric	Power Tilt
225	E225DCZIID	2011	90° V-6/200.1 cu in	30"	White	Remote	Electric	Power Tilt
225	E225DHLIID	2011	90° V-6/200.1 cu in	20"	Blue	Remote	Electric	Power Tilt
225	E225HSLIIA	2011	90° V-6/200.1 cu in	20"	White	Remote	Electric	Power Tilt
225	E225DHXIIE	2011	90° V-6/200.1 cu in	25"	Blue	Remote	Electric	Power Tilt
225	E225DPLISE	2010	90° V-6/200.1 cu in	20"	Blue	Remote	Electric	Power Tilt
225	E225DPLISF	2010	90° V-6/200.1 cu in	20"	Blue	Remote	Electric	Power Tilt
225	E225DPXISE	2010	90° V-6/200.1 cu in	25"	White	Remote	Electric	Power Tilt
225	E225DPXISF	2010	90° V-6/200.1 cu in	25"	White	Remote	Electric	Power Tilt
225	E225DPZISE	2010	90° V-6/200.1 cu in	30"	White	Remote	Electric	Power Tilt
225	E225DPZISF	2010	90° V-6/200.1 cu in	30"	White	Remote	Electric	Power Tilt
225	E225DCXISE	2010	90° V-6/200.1 cu in	25"	White	Remote	Electric	Power Tilt
225	E225DCXISF	2010	90° V-6/200.1 cu in	25"	White	Remote	Electric	Power Tilt
225	E225DCZISE	2010	90° V-6/200.1 cu in	30"	White	Remote	Electric	Power Tilt
225	E225DCZISF	2010	90° V-6/200.1 cu in	30"	White	Remote	Electric	Power Tilt
225	E225DHLISE	2010	90° V-6/200.1 cu in	20"	Blue	Remote	Electric	Power Tilt
225	E225DHLISF	2010	90° V-6/200.1 cu in	20"	Blue	Remote	Electric	Power Tilt
225	E225HSLISR	2010	90° V-6/200.1 cu in	20"	White	Remote	Electric	Power Tilt
225	E225HSLISF	2010	90° V-6/200.1 cu in	20"	White	Remote	Electric	Power Tilt
225	E225DHXISB	2010	90° V-6/200.1 cu in	25"	Blue	Remote	Electric	Power Tilt
225	E225DHXISF	2010	90° V-6/200.1 cu in	25"	Blue	Remote	Electric	Power Tilt
225	E225DPLSEB	2009	90° V-6/200.1 cu in	20"	Blue	Remote	Electric	Power Tilt
225	E225DPXSEB	2009	90° V-6/200.1 cu in	25"	White	Remote	Electric	Power Tilt
225	E225DPZSEB	2009	90° V-6/200.1 cu in	30"	White	Remote	Electric	Power Tilt
225	E225DCXSEB	2009	90° V-6/200.1 cu in	25"	White	Remote	Electric	Power Tilt
225	E225DCZSEB	2009	90° V-6/200.1 cu in	30"	White	Remote	Electric	Power Tilt
225	E225DHLSEB	2009	90° V-6/200.1 cu in	20"	Blue	Remote	Electric	Power Tilt
225	E225HSLSEC	2009	90° V-6/200.1 cu in	20"	White	Remote	Electric	Power Tilt
225	E225DHXSEM	2009	90° V-6/200.1 cu in	25"	Blue	Remote	Electric	Power Tilt
225	E225DPLSCG	2008	90° V-6/200.1 cu in	20"	Blue	Remote	Electric	Power Tilt
225	E225DPLSCH	2008	90° V-6/200.1 cu in	20"	Blue	Remote	Electric	Power Tilt
225	E225DPXSCM	2008	90° V-6/200.1 cu in	25"	White	Remote	Electric	Power Tilt
225	E225DPXSCF	2008	90° V-6/200.1 cu in	25"	White	Remote	Electric	Power Tilt
225	E225DPXSCG	2008	90° V-6/200.1 cu in	25"	White	Remote	Electric	Power Tilt
225	E225DPXSCH	2008	90° V-6/200.1 cu in	25"	White	Remote	Electric	Power Tilt
225	E225DPZSCM	2008	90° V-6/200.1 cu in	30"	White	Remote	Electric	Power Tilt
225	E225DPZSCF	2008	90° V-6/200.1 cu in	30"	White	Remote	Electric	Power Tilt
225	E225DPZSCG	2008	90° V-6/200.1 cu in	30"	White	Remote	Electric	Power Tilt
225	E225DPZSCH	2008	90° V-6/200.1 cu in	30"	White	Remote	Electric	Power Tilt
225	E225DCXSCM	2008	90° V-6/200.1 cu in	25"	White	Remote	Electric	Power Tilt
225	E225DCXSCF	2008	90° V-6/200.1 cu in	25"	White	Remote	Electric	Power Tilt
225	E225DCXSCG	2008	90° V-6/200.1 cu in	25"	White	Remote	Electric	Power Tilt
225	E225DCZSCM	2008	90° V-6/200.1 cu in	30"	White	Remote	Electric	Power Tilt
225	E225DCZSCF	2008	90° V-6/200.1 cu in	30"	White	Remote	Electric	Power Tilt
225	E225DCZSCG	2008	90° V-6/200.1 cu in	30"	White	Remote	Electric	Power Tilt
225	E225DCXSCH	2008	90° V-6/200.1 cu in	25"	White	Remote	Electric	Power Tilt

## Evinrude and Johnson Outboards 2005 - 2012

Horsepower	Model Number	Model Year	Engine	Shaft Length	Color	Steering	Starting	Midsection
225	E225DCZSCH	2008	90° V-6/200.1 cu in	30"	White	Remote	Electric	Power Tilt
225	E225DHLSCM	2008	90° V-6/200.1 cu in	20"	Blue	Remote	Electric	Power Tilt
225	E225DHLSCF	2008	90° V-6/200.1 cu in	20"	Blue	Remote	Electric	Power Tilt
225	E225DHLSCG	2008	90° V-6/200.1 cu in	20"	Blue	Remote	Electric	Power Tilt
225	E225DHLSCH	2008	90° V-6/200.1 cu in	20"	Blue	Remote	Electric	Power Tilt
225	E225HSLSCS	2008	90° V-6/200.1 cu in	20"	White	Remote	Electric	Power Tilt
225	E225HSLSCF	2008	90° V-6/200.1 cu in	20"	White	Remote	Electric	Power Tilt
225	E225HSLSCG	2008	90° V-6/200.1 cu in	20"	White	Remote	Electric	Power Tilt
225	E225HSLSCH	2008	90° V-6/200.1 cu in	20"	White	Remote	Electric	Power Tilt
225	E225DHXSCH	2008	90° V-6/200.1 cu in	25"	Blue	Remote	Electric	Power Tilt
225	E225DHXSCH	2008	90° V-6/200.1 cu in	25"	Blue	Remote	Electric	Power Tilt
225	E225DHXSCH	2008	90° V-6/200.1 cu in	25"	Blue	Remote	Electric	Power Tilt
225	E225DPLSUG	2007	90° V-6/200.1 cu in	20"	Blue	Remote	Electric	Power Tilt
225	E225DPLSUA	2007	90° V-6/200.1 cu in	20"	Blue	Remote	Electric	Power Tilt
225	E225DPXSUG	2007	90° V-6/200.1 cu in	25"	White	Remote	Electric	Power Tilt
225	E225DPXSUA	2007	90° V-6/200.1 cu in	25"	White	Remote	Electric	Power Tilt
225	E225DPZSUA	2007	90° V-6/200.1 cu in	30"	White	Remote	Electric	Power Tilt
225	E225DCXSUA	2007	90° V-6/200.1 cu in	25"	White	Remote	Electric	Power Tilt
225	E225DCZSUG	2007	90° V-6/200.1 cu in	30"	White	Remote	Electric	Power Tilt
225	E225DCZSUA	2007	90° V-6/200.1 cu in	30"	White	Remote	Electric	Power Tilt
225	E225DHLUG	2007	90° V-6/200.1 cu in	20"	Blue	Remote	Electric	Power Tilt
225	E225DHLUG	2007	90° V-6/200.1 cu in	20"	Blue	Remote	Electric	Power Tilt
225	E225DHLUG	2007	90° V-6/200.1 cu in	20"	Blue	Remote	Electric	Power Tilt
225	E225DHXSUG	2007	90° V-6/200.1 cu in	25"	Blue	Remote	Electric	Power Tilt
225	E225DHXSUR	2007	90° V-6/200.1 cu in	25"	Blue	Remote	Electric	Power Tilt
225	J225PX4SDR	2006	6 Cyl. / 220.0 cu in	25"	White	Remote	Electric	Power Tilt
225	BJ225X4SDC	2006	6 Cyl. / 220.0 cu in	25"	White	Remote	Electric	Power Tilt
225	J225CX4SDR	2006	6 Cyl. / 220.0 cu in	25"	White	Remote	Electric	Power Tilt
225	BJ225CX4DC	2006	6 Cyl. / 220.0 cu in	25"	White	Remote	Electric	Power Tilt
225	E225DPLSDR	2006	90° V-6/200.1 cu in	20"	Blue	Remote	Electric	Power Tilt
225	E225DPXSDR	2006	90° V-6/200.1 cu in	25"	White	Remote	Electric	Power Tilt
225	E225DPZSDR	2006	90° V-6/200.1 cu in	30"	White	Remote	Electric	Power Tilt
225	E225DCXSDR	2006	90° V-6/200.1 cu in	25"	White	Remote	Electric	Power Tilt
225	E225DCZSDR	2006	90° V-6/200.1 cu in	30"	White	Remote	Electric	Power Tilt
225	E225DHLSDF	2006	90° V-6/200.1 cu in	20"	Blue	Remote	Electric	Power Tilt
225	E225DHXSDF	2006	90° V-6/200.1 cu in	25"	Blue	Remote	Electric	Power Tilt
225	J225PX4SOC	2005	6 Cyl. / 220.0 cu in	25"	White	Remote	Electric	Power Tilt
225	BJ225X4SOS	2005	6 Cyl. / 220.0 cu in	25"	White	Remote	Electric	Power Tilt
225	J225PZ4SOS	2005	6 Cyl. / 220.0 cu in	30"	White	Remote	Electric	Power Tilt
225	J225CX4SOC	2005	6 Cyl. / 220.0 cu in	25"	White	Remote	Electric	Power Tilt
225	BJ225CX4SOS	2005	6 Cyl. / 220.0 cu in	25"	White	Remote	Electric	Power Tilt
225	J225CZ4SOS	2005	6 Cyl. / 220.0 cu in	30"	White	Remote	Electric	Power Tilt
225	E225DPLSOC	2005	90° V-6/200.1 cu in	20"	Blue	Remote	Electric	Power Tilt
225	E225DPXSOC	2005	90° V-6/200.1 cu in	25"	White	Remote	Electric	Power Tilt
225	E225DPZSOC	2005	90° V-6/200.1 cu in	30"	White	Remote	Electric	Power Tilt
225	E225DCXSOC	2005	90° V-6/200.1 cu in	25"	White	Remote	Electric	Power Tilt
225	E225DCZSOC	2005	90° V-6/200.1 cu in	30"	White	Remote	Electric	Power Tilt
225	E225DHLSOC	2005	90° V-6/200.1 cu in	20"	Blue	Remote	Electric	Power Tilt
225	E225DHLXOF	2005	90° V-6/200.1 cu in	20"	Blue	Remote	Electric	Power Tilt
225	E225DHLXOG	2005	90° V-6/200.1 cu in	20"	Blue	Remote	Electric	Power Tilt
225	E225DHLXOC	2005	90° V-6/200.1 cu in	25"	Blue	Remote	Electric	Power Tilt
225	E225DHXSOG	2005	90° V-6/200.1 cu in	25"	Blue	Remote	Electric	Power Tilt
250	E250DPXINS	2012	90° V-6/200.1 cu in	25"	White	Remote	Electric	Power Tilt
250	E250DPZINS	2012	90° V-6/200.1 cu in	30"	White	Remote	Electric	Power Tilt
250	E250DCXINS	2012	90° V-6/200.1 cu in	25"	White	Remote	Electric	Power Tilt
250	E250DCZINS	2012	90° V-6/200.1 cu in	30"	White	Remote	Electric	Power Tilt
250	DE250PXINR	2012	90° V-6/200.1 cu in	25"	White	Remote	Electric	Power Tilt
250	DE250PZINR	2012	90° V-6/200.1 cu in	30"	White	Remote	Electric	Power Tilt
250	DE250CXINR	2012	90° V-6/200.1 cu in	25"	White	Remote	Electric	Power Tilt
250	DE250CZINR	2012	90° V-6/200.1 cu in	30"	White	Remote	Electric	Power Tilt
250	E250HSLINA	2012	90° V-6/210 cu in	20"	White	Remote	Electric	Power Tilt
250	E250DHLINM	2012	90° V-6/210 cu in	20"	Blue	Remote	Electric	Power Tilt
250	E250DHXINM	2012	90° V-6/210 cu in	25"	Blue	Remote	Electric	Power Tilt
250	E250DPLIID	2011	90° V-6/200.1 cu in	20"	Blue	Remote	Electric	Power Tilt
250	E250DPXIID	2011	90° V-6/200.1 cu in	25"	White	Remote	Electric	Power Tilt
250	E250DPZIID	2011	90° V-6/200.1 cu in	30"	White	Remote	Electric	Power Tilt
250	E250DCXIID	2011	90° V-6/200.1 cu in	25"	White	Remote	Electric	Power Tilt
250	DE250PXIIC	2011	90° V-6/200.1 cu in	25"	White	Remote	Electric	Power Tilt
250	DE250PZIIC	2011	90° V-6/200.1 cu in	30"	White	Remote	Electric	Power Tilt
250	E250DCZIID	2011	90° V-6/200.1 cu in	30"	White	Remote	Electric	Power Tilt



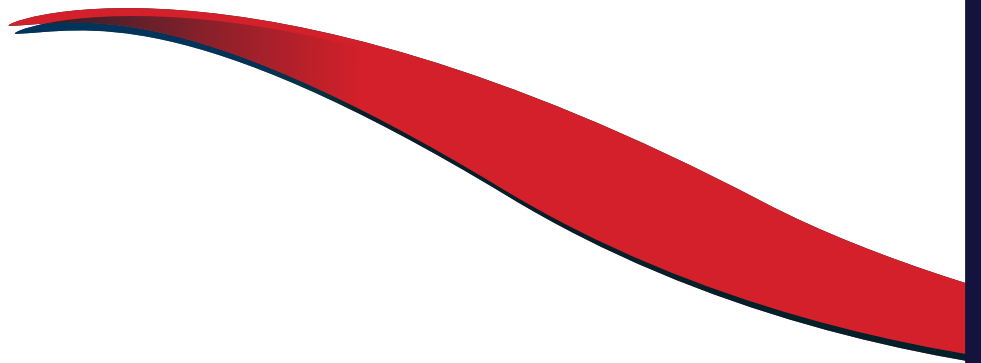


## Evinrude and Johnson Outboards 2005 - 2012

Horsepower	Model Number	Model Year	Engine	Shaft Length	Color	Steering	Starting	Midsection
250	E250DCZSUA	2007	90° V-6/200.1 cu in	30"	White	Remote	Electric	Power Tilt
250	E250DPLSDR	2006	90° V-6/200.1 cu in	25"	Blue	Remote	Electric	Power Tilt
250	E250DPXSDR	2006	90° V-6/200.1 cu in	25"	White	Remote	Electric	Power Tilt
250	E250DPZSDR	2006	90° V-6/200.1 cu in	30"	White	Remote	Electric	Power Tilt
250	E250DCXSDR	2006	90° V-6/200.1 cu in	25"	White	Remote	Electric	Power Tilt
250	E250DCZSDR	2006	90° V-6/200.1 cu in	30"	White	Remote	Electric	Power Tilt
250	J250PX4SOS	2005	6 Cyl. / 220.0 cu in	25"	White	Remote	Electric	Power Tilt
250	J250PZ4SOS	2005	6 Cyl. / 220.0 cu in	30"	White	Remote	Electric	Power Tilt
250	J250CX4SOS	2005	6 Cyl. / 220.0 cu in	25"	White	Remote	Electric	Power Tilt
250	J250CZ4SOS	2005	6 Cyl. / 220.0 cu in	30"	White	Remote	Electric	Power Tilt
250	E250DPLSOC	2005	90° V-6/200.1 cu in	20"	Blue	Remote	Electric	Power Tilt
250	E250DPXSOC	2005	90° V-6/200.1 cu in	25"	White	Remote	Electric	Power Tilt
250	E250DPZSOC	2005	90° V-6/200.1 cu in	30"	White	Remote	Electric	Power Tilt
250	E250DCXSOC	2005	90° V-6/200.1 cu in	25"	White	Remote	Electric	Power Tilt
250	E250DCZSOC	2005	90° V-6/200.1 cu in	30"	White	Remote	Electric	Power Tilt
300	E300DSLINA	2012	90° V-6/210 cu in	20"	White	Remote	Electric	Power Tilt
300	E300DPXINM	2012	90° V-6/210 cu in	25"	White	Remote	Electric	Power Tilt
300	E300DPZINM	2012	90° V-6/210 cu in	30"	White	Remote	Electric	Power Tilt
300	E300DCXINM	2012	90° V-6/210 cu in	25"	White	Remote	Electric	Power Tilt
300	E300DCZINM	2012	90° V-6/210 cu in	30"	White	Remote	Electric	Power Tilt
300	DE300PXINR	2012	90° V-6/210 cu in	25"	White	Remote	Electric	Power Tilt
300	DE300PZINR	2012	90° V-6/210 cu in	30"	White	Remote	Electric	Power Tilt
300	DE300CXINR	2012	90° V-6/210 cu in	25"	White	Remote	Electric	Power Tilt
300	DE300CZINR	2012	90° V-6/210 cu in	30"	White	Remote	Electric	Power Tilt
300	E300DSLIR	2011	90° V-6/210 cu in	20"	White	Remote	Electric	Power Tilt
300	E300DPXIIA	2011	90° V-6/210 cu in	25"	White	Remote	Electric	Power Tilt
300	E300DPZIIA	2011	90° V-6/210 cu in	30"	White	Remote	Electric	Power Tilt
300	E300DCXIIA	2011	90° V-6/210 cu in	25"	White	Remote	Electric	Power Tilt
300	E300DCZIIA	2011	90° V-6/210 cu in	30"	White	Remote	Electric	Power Tilt
300	DE300PXIIC	2011	90° V-6/210 cu in	25"	White	Remote	Electric	Power Tilt
300	DE300PZIIC	2011	90° V-6/210 cu in	30"	White	Remote	Electric	Power Tilt
300	DE300CXIIC	2011	90° V-6/210 cu in	25"	White	Remote	Electric	Power Tilt
300	DE300CZIIC	2011	90° V-6/210 cu in	30"	White	Remote	Electric	Power Tilt
300	E300DSLISC	2010	90° V-6/210 cu in	20"	White	Remote	Electric	Power Tilt
300	E300DSLISG	2010	90° V-6/210 cu in	20"	White	Remote	Electric	Power Tilt
300	E300DSLISF	2010	90° V-6/210 cu in	20"	White	Remote	Electric	Power Tilt
300	E300DPXISR	2010	90° V-6/210 cu in	25"	White	Remote	Electric	Power Tilt
300	E300DPXISG	2010	90° V-6/210 cu in	25"	White	Remote	Electric	Power Tilt
300	E300DPXISF	2010	90° V-6/210 cu in	25"	White	Remote	Electric	Power Tilt
300	E300DPZISR	2010	90° V-6/210 cu in	30"	White	Remote	Electric	Power Tilt
300	E300DPZISG	2010	90° V-6/210 cu in	30"	White	Remote	Electric	Power Tilt
300	E300DPZISF	2010	90° V-6/210 cu in	30"	White	Remote	Electric	Power Tilt
300	E300DCXISR	2010	90° V-6/210 cu in	25"	White	Remote	Electric	Power Tilt
300	E300DCXISG	2010	90° V-6/210 cu in	25"	White	Remote	Electric	Power Tilt
300	E300DCXISF	2010	90° V-6/210 cu in	25"	White	Remote	Electric	Power Tilt
300	E300DCZISR	2010	90° V-6/210 cu in	30"	White	Remote	Electric	Power Tilt
300	E300DCZISG	2010	90° V-6/210 cu in	30"	White	Remote	Electric	Power Tilt
300	E300DCZISF	2010	90° V-6/210 cu in	30"	White	Remote	Electric	Power Tilt
300	DE300PXISS	2010	90° V-6/210 cu in	25"	White	Remote	Electric	Power Tilt
300	DE300PXISG	2010	90° V-6/210 cu in	25"	White	Remote	Electric	Power Tilt
300	DE300PXISF	2010	90° V-6/210 cu in	25"	White	Remote	Electric	Power Tilt
300	DE300PZISS	2010	90° V-6/210 cu in	30"	White	Remote	Electric	Power Tilt
300	DE300PZISG	2010	90° V-6/210 cu in	30"	White	Remote	Electric	Power Tilt
300	DE300PZISF	2010	90° V-6/210 cu in	30"	White	Remote	Electric	Power Tilt
300	DE300CXISS	2010	90° V-6/210 cu in	25"	White	Remote	Electric	Power Tilt
300	DE300CXISG	2010	90° V-6/210 cu in	25"	White	Remote	Electric	Power Tilt
300	DE300CXISF	2010	90° V-6/210 cu in	25"	White	Remote	Electric	Power Tilt
300	DE300CZISS	2010	90° V-6/210 cu in	30"	White	Remote	Electric	Power Tilt
300	DE300CZISG	2010	90° V-6/210 cu in	30"	White	Remote	Electric	Power Tilt
300	DE300CZISF	2010	90° V-6/210 cu in	30"	White	Remote	Electric	Power Tilt
300	E300DPXSCS	2008	90° V-6/210 cu in	25"	White	Remote	Electric	Power Tilt
300	E300DPZSCS	2008	90° V-6/210 cu in	30"	White	Remote	Electric	Power Tilt
300	E300DCXSCS	2008	90° V-6/210 cu in	25"	White	Remote	Electric	Power Tilt
300	E300DCZSCS	2008	90° V-6/210 cu in	30"	White	Remote	Electric	Power Tilt







DSS11529

7/11